



OASIS
BATHROOM

LUXURY ROOMS



There is only one area of Italy where the air can blow in from foreign lands, that place is Friuli. And along with that wind comes history, style and certain ways of thinking. It is here that the story of Oasis began, the result of a refined and eclectic merging of different cultures, civilisations, languages and cuisines often referred to around the world as “Italian style”.

1908

Floriano Quaia opens his first carpentry workshop: a small studio where furniture is made with the aim of lasting a lifetime.

1945

Bernardo Quaia, son of Floriano, sets down the foundations of a company where the first pieces of decorative furniture would later be developed.

1972

Francesco, Bernardo’s son, builds a factory and creates - using his surname - an actual brand. Together with his brother Floriano, he sets up Arredamenti Quaia.

1980

Arredamenti Quaia participates in the Salone del Mobile, Milan for the very first time. The accompanying burst of innovation marks a turning point for the company which sets its sights on ever broader horizons.

1984

During the flurry of the Eighties, Francesco Quaia establishes the Oasis brand, branching out into the production of bathroom furniture which thereafter becomes part of the company offer.

The New Millennium

At the turn of the Millennium, an impetus of change, of fresh new ideas, sweeps through the company in the form of the next generation, Francesco’s three children: Francesca, Federica and Lorenzo.

2001

The eldest, Francesca, is the first to work alongside her father in the business and, as assuming responsibility for the commercial direction of the company, is pivotal in steering it along the road to internationalisation.

2005

It sees the setting up of the first international base for the company, in the city of Moscow. Warm and harmonious Italian spirit meets the essence of regal Russia and the two succeed in winning one another over.

2006

Second daughter Federica, having specialised in the worldwide branding of luxury goods, takes over all aspects of image and communication within the company, thus assuming marketing and artistic control.

2008

Third-born Lorenzo completes the transition to the fourth generation. Specialising in project research and development as well as highly technical products, he becomes head of the technical production division.

2012

The Home line is completely revised and relaunched with the aim of offering, under the Oasis label, a complete and coordinated luxury interiors package inspired by the language of cosmopolitan and contemporary style.

2013

It sees monobrand flagship showrooms opening in both London and Hong Kong.

Nowadays

The company is a century-old family business characterised by courage, tradition and a strong identity.

It has market presence in more than 25 countries, the main ones being: Russia, Ukraine, the United Kingdom, Germany, France, Switzerland, Belgium and the United States.

The Oasis production portfolio includes a wide range of furniture collections for the Home, the Bathroom and the Contract industry for the construction of projects for both residential and professional purposes.

RIALTO

Un luogo di elezione per i veneziani, Rialto, dà il nome a questa collezione della serie Luxury di Oasis, davvero unica nella sua preziosità. Ispirata agli interni sontuosi dei palazzi di Venezia, la collezione comprende una consolle con lavabo e una serie di colonne per il contenimento.

La collezione viene proposta in due varianti: una tutta in vetro specchiato, l'altra con top e gambe rivestiti in vetro nero. Caratteristica è la decorazione cannettata dei frontali, ripresa nell'esclusivo lavabo d'appoggio in resina bianco lucida. Rialto è una composizione unica, dedicata all'interior design di chi cerca il lusso estremo, per salle de bain da sogno.

A favoured location for Venetians, Rialto is the name chosen for this Oasis Luxury line which is unquestionably unique in its beauty and craftsmanship. Inspired by the sumptuous interiors of Venetian palaces, the collection is made up of a basin console with matching storage cabinets and is available in two variations: either fashioned completely from mirrored glass or featuring the top and legs in black glass. Displaying a characteristic ribbed decoration on the fronts, a motif carried through into the design of the exclusive white gloss resin basin, Rialto offers a unique look which is perfect for those who seek ultra luxurious décor for their dream salle de bain.

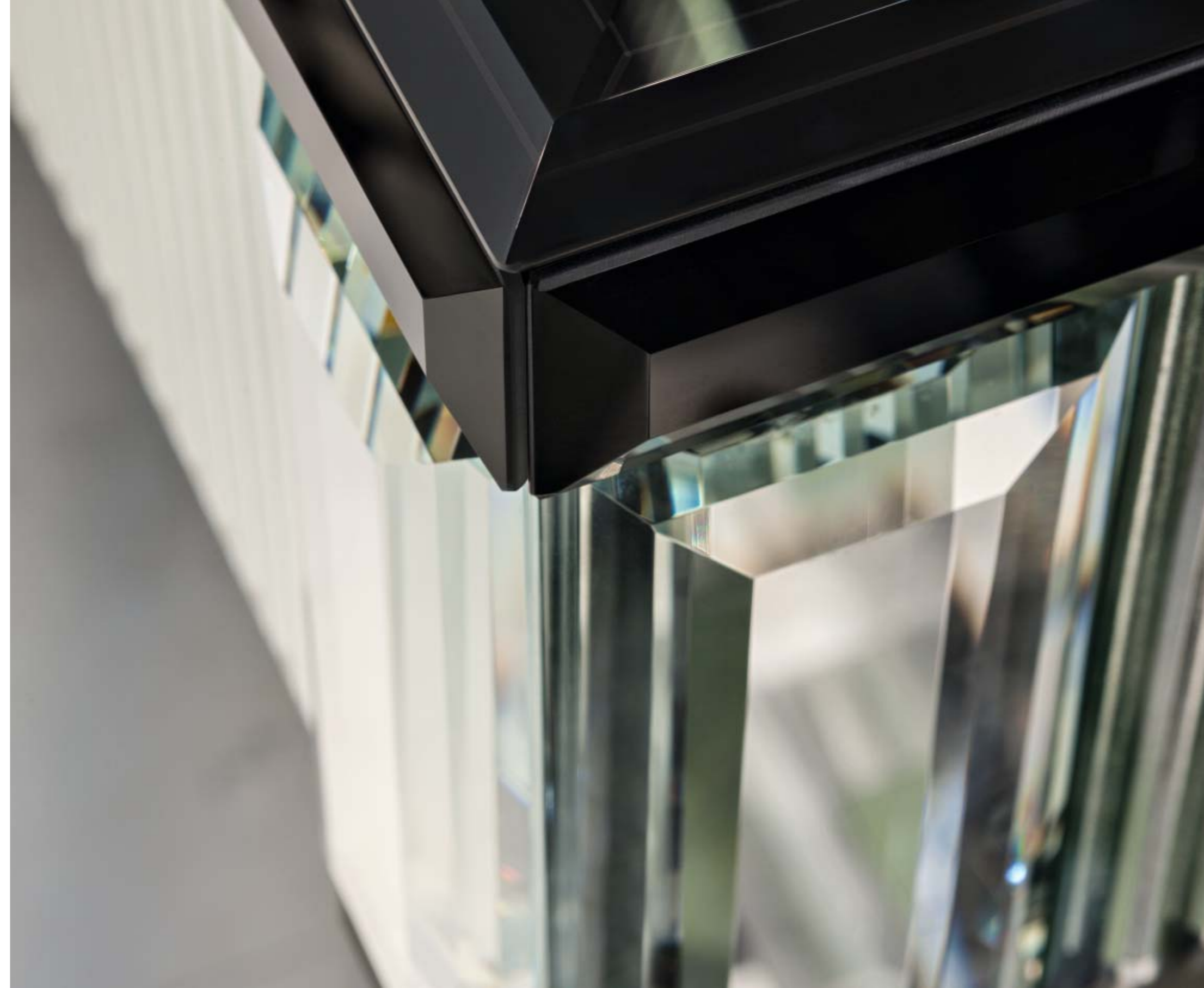






RIALTO RL2 - L98 + L98, P51, H200 cm

Vanity units with legs and top in black glass. Frontal drawers in ribbed mirror finish. Washbasins in glossy white resin with ribbed decoration. Rectangular mirrors with ribbed decoration. MURANO wall lamps in transparent/black glass finish. Taps in chrome finish. Wall unit and tall units in black glass with ribbed mirror finish decoration. SQUARE free-standing towel holder in chrome finish. SATEN armchairs, LUIS coffee tables and FLOWER floor lamp.





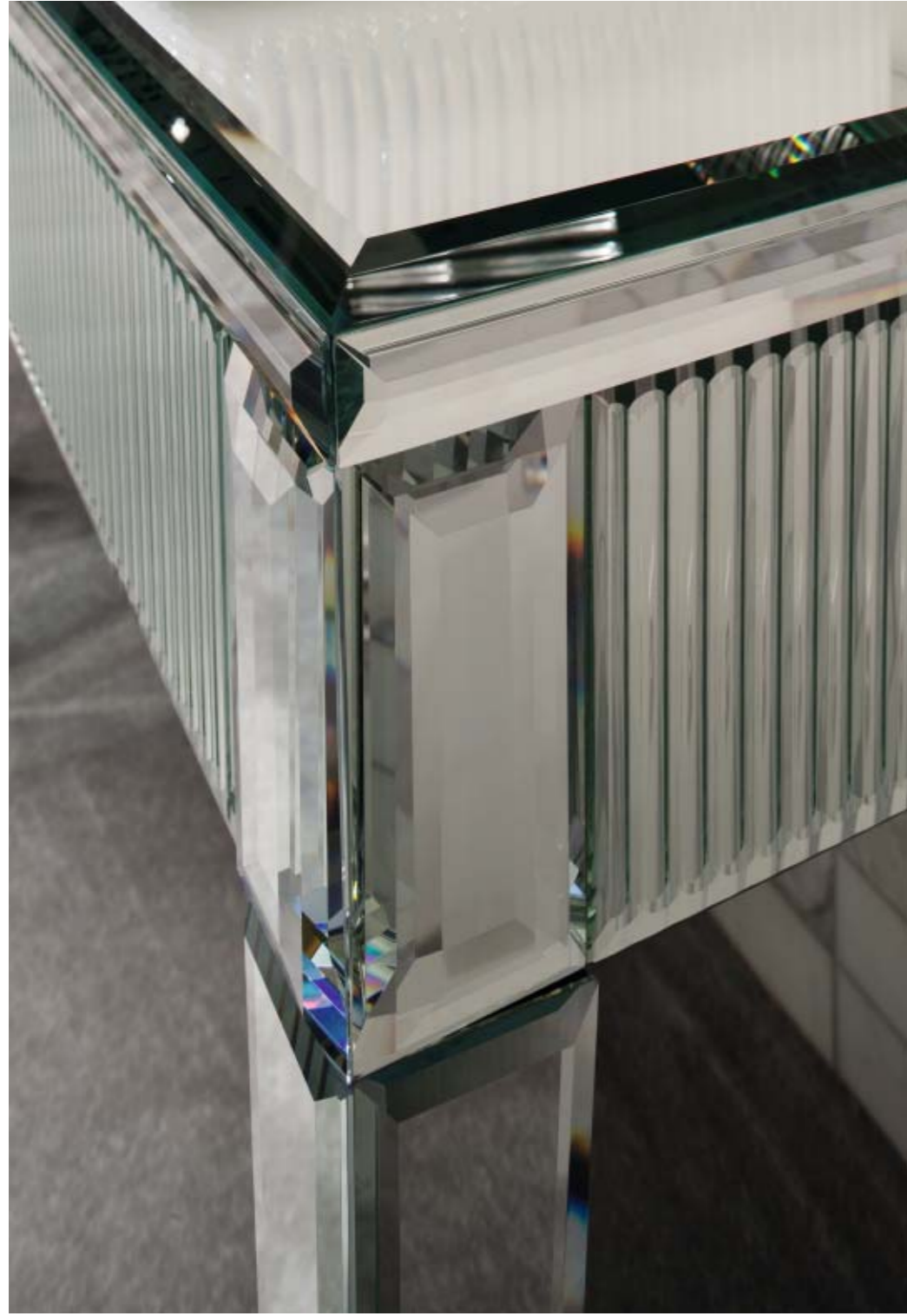




RIALTO RL1 - L98 + L98, P51, H200 cm

Vanity units with drawer in engraved glass and ribbed decoration. Washbasins in glossy white resin with ribbed decoration. Rectangular mirrors with ribbed decoration. MURANO wall lamps in transparent glass and chrome trims. VENICE taps in chrome finish. Small console in engraved glass and ribbed decoration. SQUARE wall fixed towel holder in chrome finish. MUFFIN ottomans.





ACADEMY

Oro, lacche e marmi preziosi per Academy, la nuova collezione di arredo bagno che trova la sua collocazione nelle stanze da bagno più raffinate.

Dalla lacca con decoro “ribbed” o “diamond”, al vetro, ai marmi, l'eccellenza della tradizione italiana arreda le “salle de bain” più esclusive, ambienti in cui indugiare, prendersi cura di sé e rigenerarsi, in un'atmosfera elegante e sofisticata.

Gli arredi si completano con accessori e complementi: panchette in tessuto, specchiere bronzate o fumé, lampade, colonne e portasalviette, con finiture e colori coordinati tra loro, per gli interior designer più esigenti.

Lacquerings, gold and marble finishing for Academy, the new Luxury Bathroom collection, suitable for the most elegant locations.

Once again the italian finest tradition, with its ribbed or diamond-like decorated lacquering, the glasses and the marbles, furnished the most exclusive “salle de bain”, creating spaces to contemplate, relax, and take care of yourself and allowing a sophisticated and comforting atmosphere.

The designed pieces dialogue with accessories and complements: elegant pouf and benches, bronzed and smoked wall mirrors, lightings, tall units and towel holder cases, with matching finishings and colors, will please the even most demanding interior designers.







ACADEMY A12 - L110 + L110, P53, H200 cm

Vanity units in G556 glossy black finish with ribbed decoration and gold finish details. Tops in mystic brown marble, undercounter black ceramic washbasins, rectangular mirrors with ribbed decoration and gold finish details. EDGE SMALL wall lamps. FORTUNY taps in gold finish. Towel holder in G556 glossy black finish with ribbed decoration, gold finish details and top in mystic brown marble. Tall unit in G556 glossy black finish with ribbed decoration and gold finish details. DIAMOND free-standing towel holder in gold finish. PSICHE' mirrors and EDGE vertical pendant lamp.



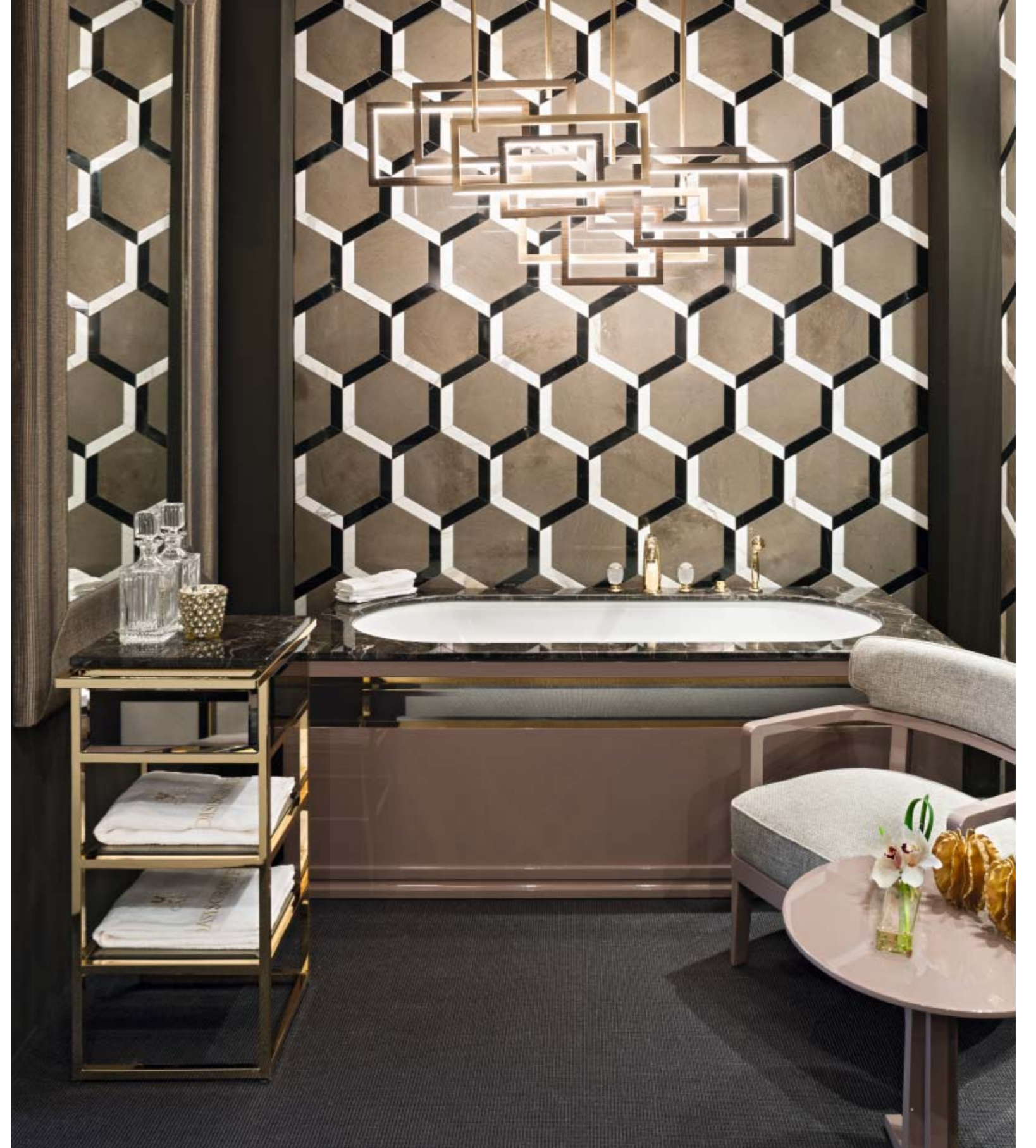




ACADEMY A7 - L160, P53, H200 cm

Vanity unit in gold finish and bronzed mirror panels. Mystic brown marble top, double undercounter white ceramic washbasins, rectangular mirror in gold finish and bronzed mirror panels. NELLY wall lamps. VENICE taps in gold finish. Towel holder in gold finish and bronzed mirror panels and top in mystic brown marble. ACADEMY bathtub in gold finish and bronzed mirror panels and mystic brown marble top. DIAMOND free-standing towel holder in gold finish. PSICHE' mirror, ZOE small armchair, LUIS side table and EDGE horizontal pendant lamp.









ACADEMY A13 - L190, P53, H200 cm

Vanity unit in G164 glossy lino finish with ribbed decoration and gold details, emperador light marble top, undercounter white ceramic washbasins. Rectangular mirror in G164 glossy lino finish with ribbed decoration and gold details. VICKY wall lamps in gold finish. Taps in gold finish. Tall units, small bench and ottoman in G164 glossy lino finish with ribbed decoration and gold details. Towel holders in G164 glossy lino finish with ribbed decoration, gold details and emperador light marble top.







ACADEMY A14 - L160, P53, H200 cm

Vanity unit in chrome finish and smoked mirror panels, nero marquina marble top, undercounter black ceramic washbasins. Rectangular mirror in chrome finish and smoked mirror panels. MURANO wall lamps in transparent/black glass finish. Taps in chrome finish. Tall unit in chrome finish and smoked mirror panels. ACADEMY bathtub in chrome finish, smoked mirror panels and nero marquina marble top. DIAMOND free-standing towel holder in chrome finish. TAMBURO pendant lamp.

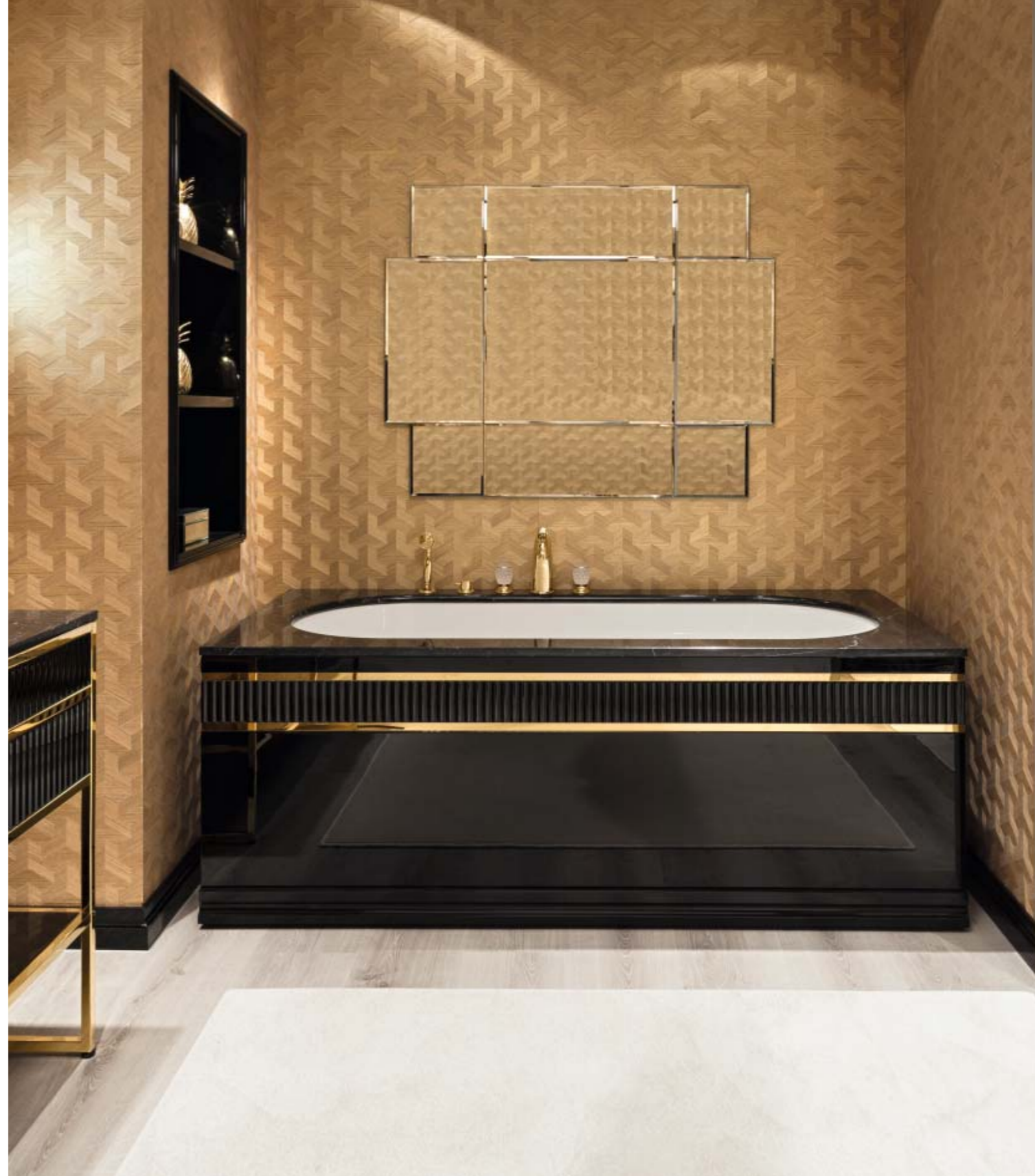
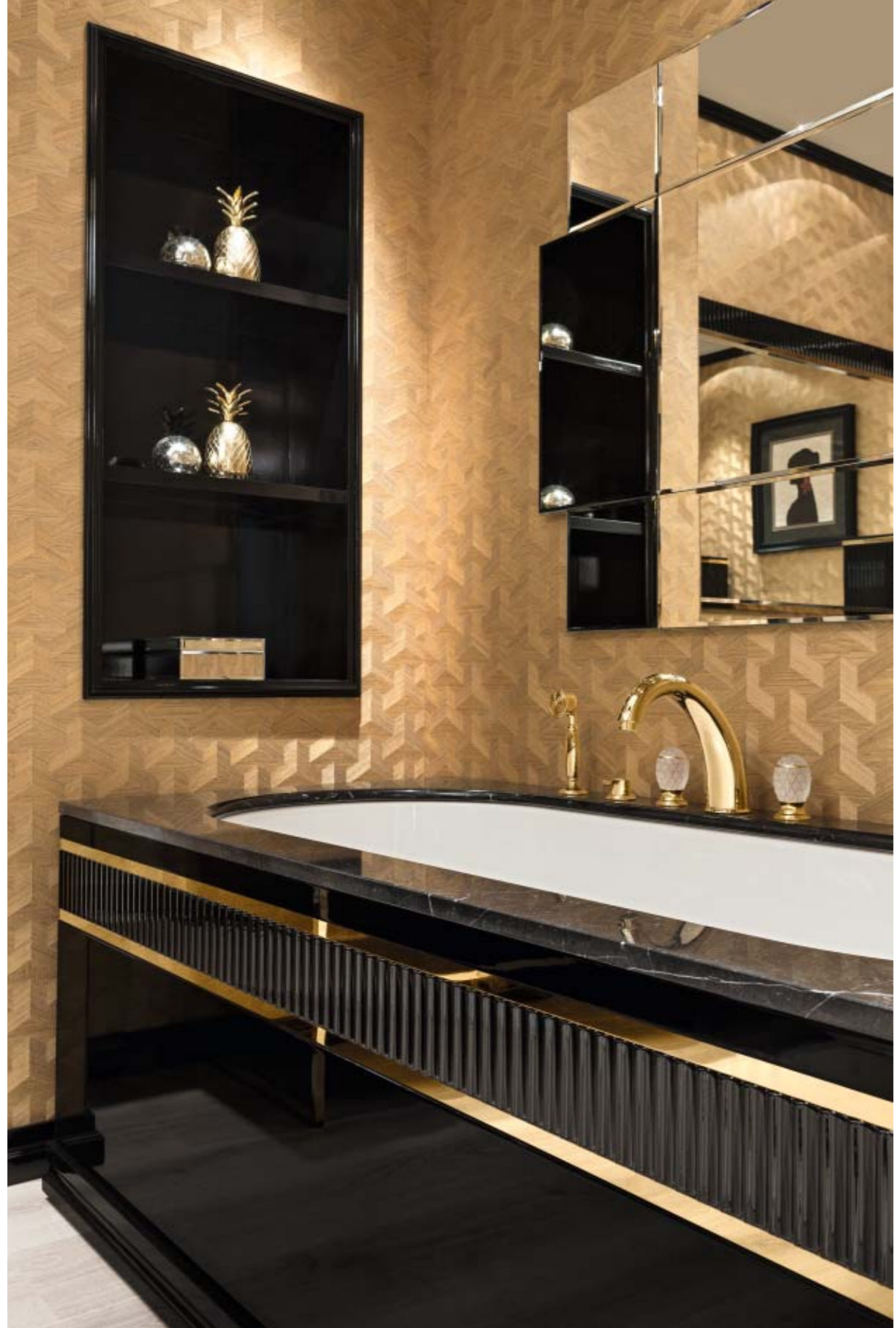




ACADEMY A15 - L160, P53, H200 cm

Vanity unit in G556 glossy black finish with ribbed decoration and gold metal details. Top in nero marquina marble, undercounter black ceramic washbasins, rectangular mirrors with ribbed decoration and gold finish details. VICKY wall lamps. VENICE taps in gold finish. ACADEMY bathtub in G556 glossy black finish with ribbed decoration, gold metal details and top in nero marquina marble. Tall unit and small bench in G556 glossy black finish with ribbed decoration and gold finish details. DIAMOND free-standing towel holder in gold finish. SQUARE wall mounted towel holder. TAMBURO pendant lamp.





LUTETIA

Lutetia è il nome assegnato dagli antichi romani a Parigi, capitale assoluta dell' Art Déco, stile al quale il modello si ispira. Nei dettagli delle maniglie, del puntale del piede, nelle linee squadrate e nelle raffinate laccature se ne manifestano i richiami più evidenti. Gli specchi e le lampade, abbinati alla consolle a cui si appoggia il lavabo, sono progettati per evocare un'atmosfera tipicamente Anni Venti.

Lutetia is the name given by the ancient Romans to Paris, absolute capital of the Art Déco, style to which the new model is inspired. The most obvious references to Art Déco are exhibited in the details of the handles, the tip of the foot, and in the square lines of the furniture. The mirrors and the lamps, combined with the console on which it rests the sink, are designed to evoke a typical Twenties atmosphere.





LUTETIA L14





LUTETIA L14 - L180, P56, H220 cm

Vanity unit in G9 glossy malva finish and gold metal details. Bianco statuario marble top, washbasins in glossy white resin. Rectangular mirror with engraved trims and incorporated wall lamps in satin glass and gold trims. FORTUNY taps in gold finish. AURELIE bathtub in G9 glossy malva finish, gold finish details and top in bianco statuario marble. Wall fixed towel holders in gold finish, free-standing lacquered towel holder with compartment in G9 glossy malva finish and gold metal details.







LUTETIA L10 - L180, P56, H220 cm

Vanity unit in G501 tortora finish with gold trims. Top in calacatta oro marble, washbasin in glossy white resin, FORTUNY tap in gold finish, rectangular mirror with engraved glass, wall lamps in satin glass and gold trims. Dressing table in G501 tortora finish with incorporated lift-up lid and led lighting. Small armchair with gold feet. AURELIE bathtub in G501 tortora finish with gold trims and top in calacatta oro marble. Free-standing lacquered towel holder with compartment in G501 glossy tortora finish and gold metal details. Boiserie matched with the composition, in G501 tortora finish and gold trims.







LUTETIA L18





LUTETIA L18 - L136, P56, H220 cm

Vanity unit in G002 glossy bianco finish and chrome details, bianco statuario marble top, washbasin in white resin. Rectangular mirror with engraved glass. Wall lamps in satin glass and chrome finish. AURELIE bathtub in G002 glossy bianco finish, chrome details and bianco statuario marble top. Taps in chrome finish. Wall fixed towel holders in chrome finish.







LUTETIA L1 - L180, P56, H220 cm

Vanity unit in G556 black finish with gold metal details. Top in nero marquina marble, washbasins in glossy white resin, FORTUNY taps in gold finish, rectangular mirror with engraved glass, wall lamps in satin glass and gold trims. MUFFIN ottoman and FEBE armchair.

LUTETIA L2 - L115, P56, H80 cm

Dressing table in G556 black finish with gold metal details and incorporated lift-up lid and led lighting.







LUTETIA L16 - L115, P56, H220 cm

Vanity unit in M12 mint finish with gold metal details. Top in lasa fantastico marble, washbasin in glossy white resin, FORTUNY tap in gold finish, rectangular mirror with engraved glass, wall lamps in satin glass and gold trims. Free-standing lacquered towel holder with compartment in G12 glossy mint finish and gold metal details. Wall fixed towel holders in gold finish. JULES & JIM side tables.





LUTETIA L15 - L180, P56, H210 cm

Vanity unit in G164 lino finish with gold trims. Top in mystic brown marble, washbasin in glossy white resin, SEAHORSE tap in gold finish. Rectangular mirror with engraved glass and incorporated LANTERNA wall lamps in satin glass and gold trims. Tall unit in G164 lino finish. Free-standing lacquered towel holder with compartment in G164 glossy lino finish and gold metal details. Wall fixed towel holder in gold finish. AVA small armchair and ORFEO side table.



RIVIERE

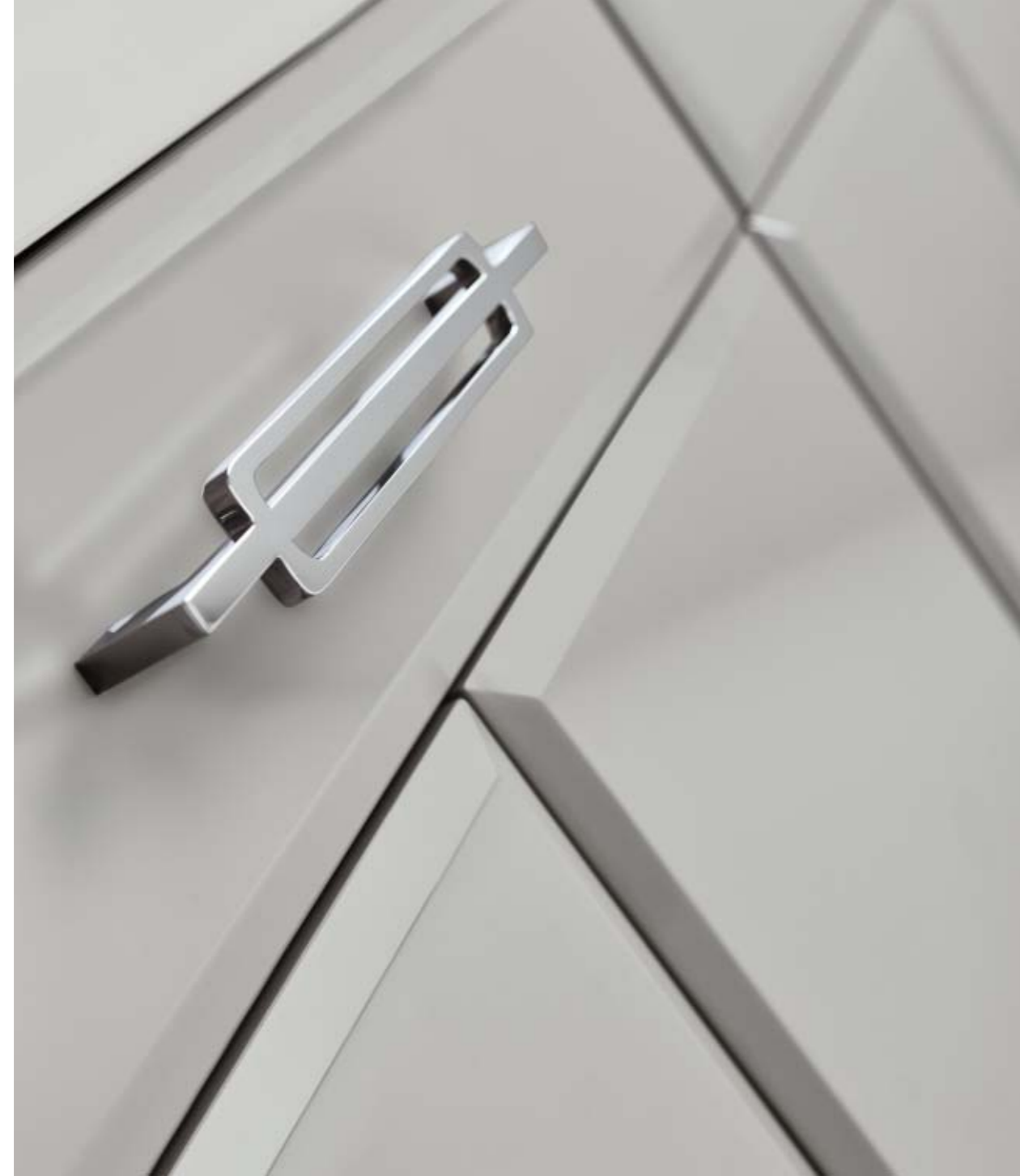
Riviere è una delle preziosissime linee che compongono le proposte più raffinate della collezione Luxury di Oasis, dal nome fortemente evocativo.

La serie comprende una gamma di consolle e di mobili in diversi materiali e finiture, che si combinano con differenti lavabi, marmi e vetri. La collezione è caratterizzata da geometrie ispirata all'Art Déco, con linee asciutte ed equilibrate e cassetti sottolineati da una maniglia dal segno grafico di grande effetto. Le finiture di ante e frontali: laccate, specchiate, con specchio fumè o bronzato, oppure in vetro decorato, consentono alla collezione di assumere diversi mood, che vanno da uno stile più classico ad uno più contemporaneo. Le maniglie e i piedini, cromati o dorati, completano la definizione dello stile.

Riviere is one of the exquisite ranges that make up the sophisticated and aptly named Oasis Luxury Collection. The line consists of consoles and vanity units in different materials and finishes which are teamed with a variety of basins, marbles and specialist glass types. The collection is characterised by geometries inspired by Art Déco with crisp balanced lines and drawers featuring a high-impact handle design. The fronts and sides are available in lacquer, mirror including fumè and bronze versions or in decorative glass, thereby allowing the collection to convey different moods from contemporary to more classical in style. The handles and feet, in either chrome or gold, serve to define and reinforce the overall look.







RIVIERE RV2 - Version A - L140, P57, H195 cm

Vanity unit with two drawers and four doors in G13 glossy pearl finish and chrome metal details. Integrated glossy glass top in 113 pearl finish. CASABLANCA mirror in G13 glossy pearl finish and chrome metal frame. ZEFIRO wall lamps in chrome finish. VENICE taps in chrome finish. Wall mounted towel holder in chrome finish. AURELIE bathtub in G13 glossy pearl finish with chrome details and top in bianco statuario marble. Free-standing tall units and wall unit in G13 glossy pearl finish and chrome metal details. SQUARE free-standing accessories holder in G13 glossy pearl finish and chrome metal details.





RIVIERE RV4





RIVIERE RV4 - Version A - L140, P57, H195 cm

Console with one drawer in G556 glossy black finish and gold metal details. Top in nero marquina marble and gold stainless steel basin. CASABLANCA mirror with gold metal trim. EDGE SMALL wall lamps. FORTUNY tap in gold finish. Wall mounted towel holder in gold finish. Free-standing tall unit in G556 glossy black finish and gold metal details. TIFFANY bathtub in G556 glossy black finish with gold details and top in nero marquina marble. SQUARE free-standing towel holder in gold finish. SATEN armchair, ANDRE' coffee tables and EDGE horizontal pendant lamp.







RIVIERE RV3 - Version A - L140, P57, H195 cm

Console in G002 glossy bianco finish and chrome metal details. Two drawers with frontal panels in mirror. Top in bianco carrara marble and two silver stainless steel basins. VALENTINO mirror with chrome metal frame. CLEO wall lamps in chrome finish. FORTUNY taps in chrome finish. Wall mounted towel holder in chrome finish. Free-standing tall unit in G002 glossy bianco finish with mirror door and chrome metal details. DIAMOND free-standing towel holder in chrome finish. LYS small bench.







RIVIERE RV1 - Version A - L77, P57, H195 cm

Vanity unit with one drawer and two doors in G164 glossy lino finish and gold metal details. Top in emperador light marble and rectangular white ceramic washbasin. CASABLANCA mirror with gold metal trim and wall lamps in gold finish. VENICE tap in gold finish. SQUARE wall mounted towel holder in gold finish. Suspended tall unit in G164 glossy lino finish and gold metal details. COLETTE small armchair and EROS side tables.



DAPHNE

Estrema eleganza nelle forme, abbinata ad un'elevata componibilità, sono le caratteristiche principali di Daphne, collezione ispirata alle linee ricercate dell'Art Decò, dove vetri e cristalli di rivestimento sono lavorati in vetro molato a 45 gradi. Disponibile in doppia versione, sia sospesa che d'appoggio a terra, e arricchita da piedini, profili e maniglie dal design ricercato, la collezione Daphne garantisce un effetto di totale linearità.

Extreme elegance in shapes, linked to a large modularity, are the main features of Daphne, a collection inspired by Art Decò lines, where glass and crystals are worked in beveled glass of 45 degrees. Daphne is available in two versions, floor standing or wall hung, and it is enriched by feet, trims and handles characterized by a refined design which guarantees a whole effect of elegance and linearity.







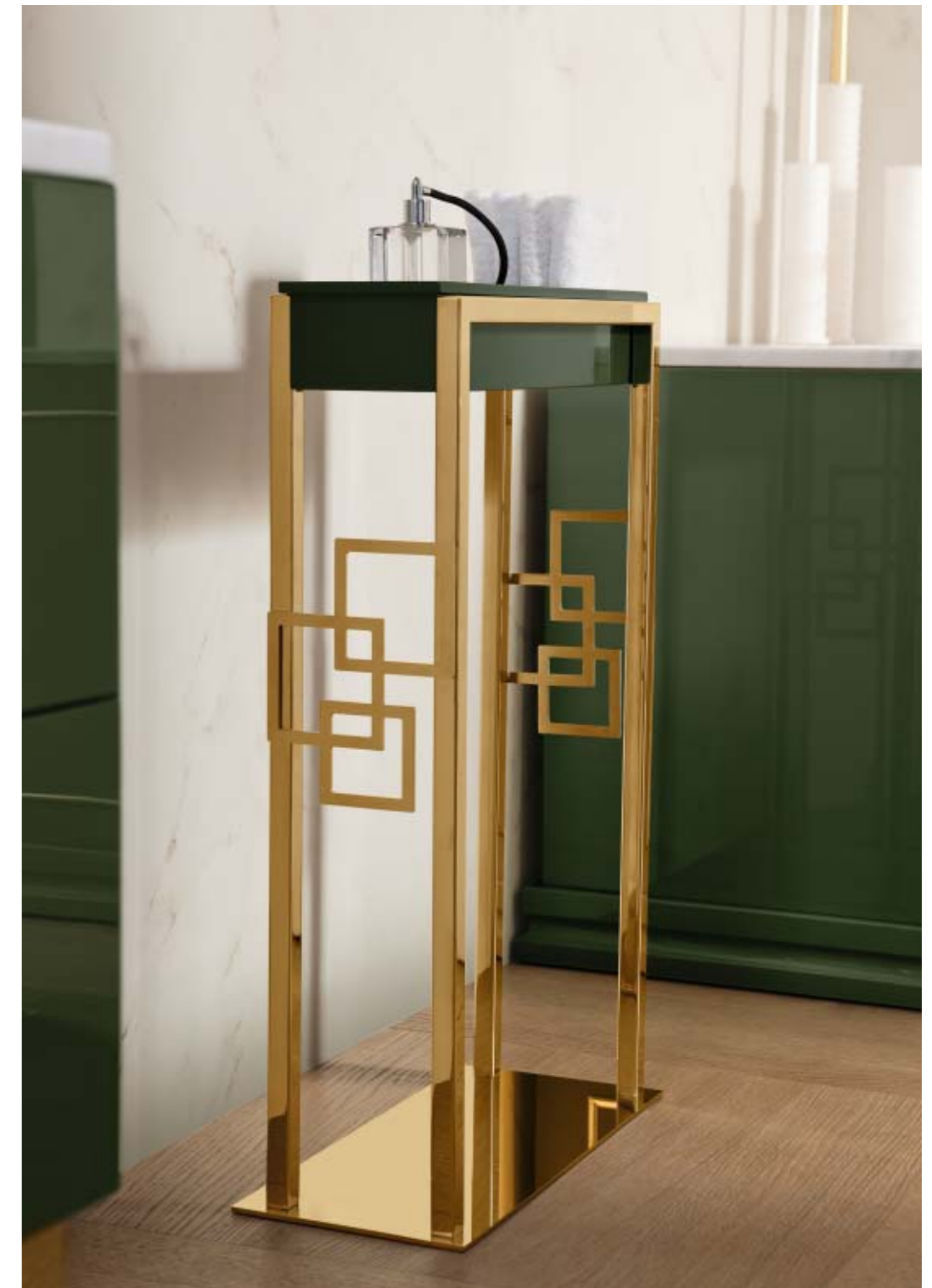
DAPHNE D19 - L154, P51, H210 cm

Vanity unit covered by smoked mirror with chrome details, washbasin in glossy white resin. Rectangular mirror in G556 glossy black finish and chrome frame. VICKY wall lamps in chrome finish. FORTUNY tap in chrome finish. DIAMOND wall fixed towel holders in chrome finish. SQUARE free-standing accessories holder in G556 glossy black finish and chrome metal details.





DAPHNE D16





DAPHNE D16 - L88, P50, H195 cm

Vanity unit in G210 glossy forest finish with gold details. Top in bianco statuario marble, washbasin in glossy white resin. VENICE tap in gold finish. Rectangular mirror with engraved glass and gold frame. NELLY wall lamps with lampshade in white cotton. Tall unit in G210 glossy forest finish with gold details. SQUARE free-standing accessories holder in G210 glossy forest finish and gold metal details. Wall fixed towel holder in gold finish.







DAPHNE D18 - L176, P50, H200 cm

Vanity unit in G19 glossy navy finish with chrome details. Top in bianco statuario marble, washbasins in glossy white resin, VENICE taps in chrome finish, rectangular mirrors in G19 glossy navy finish and chrome frame. Tall unit in G19 glossy navy finish with chrome details, VICKY wall lamps in chrome finish. SQUARE free-standing accessories holder in G19 glossy navy finish and chrome metal details. Wall fixed towel holders in chrome finish.



RIVOLI

Le composizioni della linea RIVOLI prendono ispirazione dal design più ricco e dalla decorazione artigianale più raffinata, senza rinunciare a dettagli attuali e moderni. Forme dall'eleganza lineare si uniscono a specchi, bugne, cristalli e metalli preziosi. RIVOLI si presenta con una nuova gamma di colori ed elementi decorativi, offrendo un'ampia scelta di finiture ricercate.

RIVOLI compositions take inspiration from the richest design and the most refined artisan decoration, without giving up modern details.

Linear shapes combine with elegant mirrors, studs, crystals and precious metals. RIVOLI offers a new range of colors and decorative elements with a wide selection of lacquers and sophisticated finishes.







RIVOLI RS1 - "Special Edition" - L170, P50, H220 cm

Vanity unit in Venetian antique mirror finish. Top in Venetian antique mirror finish, washbasins in glossy white resin, FORTUNY taps in chrome finish, rectangular mirror in Venetian antique mirror finish.



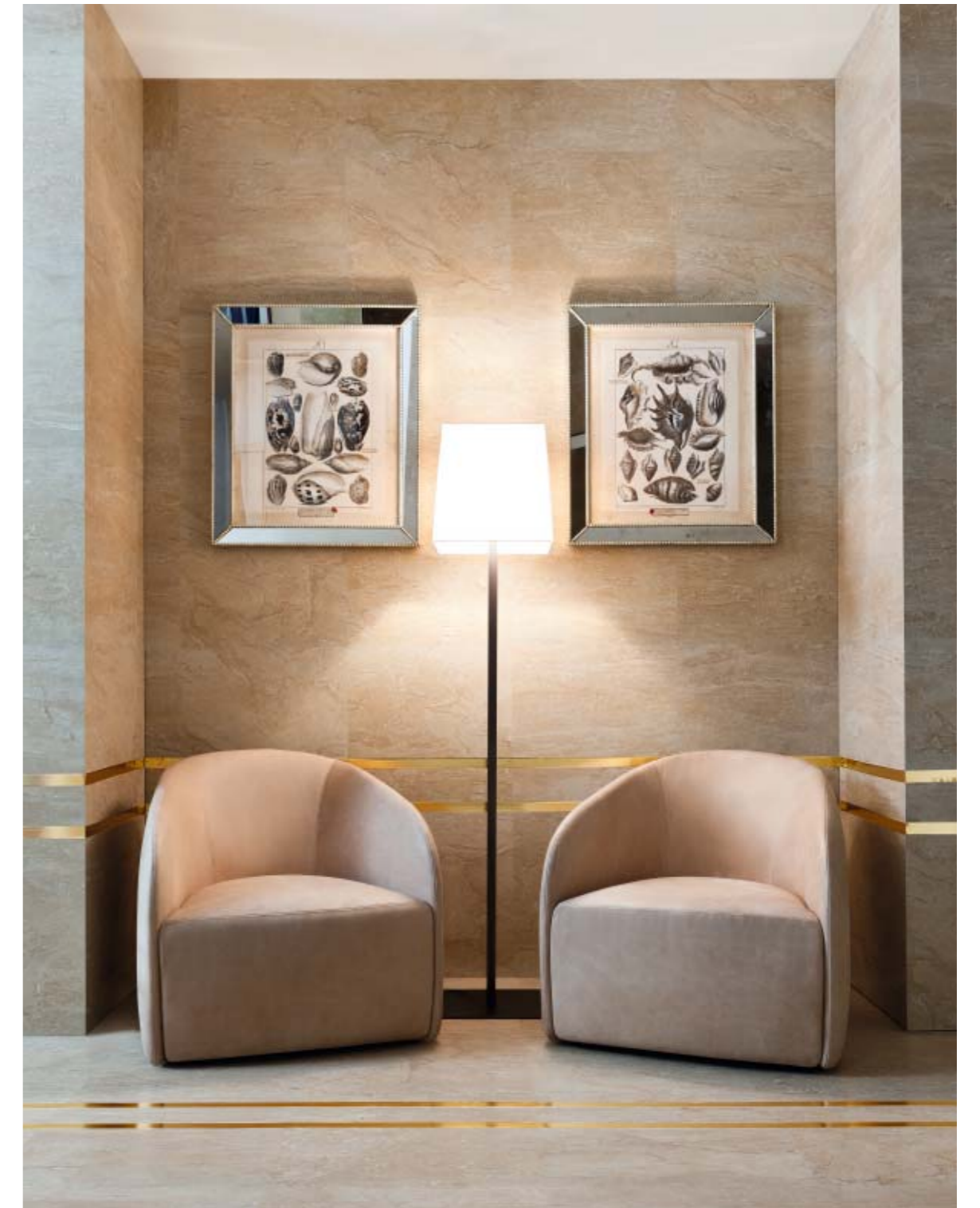




RIVOLI R17 - L170, P51, H220 cm

Vanity unit in G556 glossy black finish and rhombus decoration. Top in nero marquina marble, washbasin in glossy white resin, rectangular mirror with engraved trims and chrome finish frame. IRISA wall lamps with lampshade in white cotton, SEAHORSE tap in chrome finish. Tall unit in G556 glossy black finish and rhombus decoration. DIAMOND bathtub in G556 glossy black finish, rhombus decoration and top in nero marquina marble. DIAMOND free-standing towel holder in chrome finish and wall fixed towel holders in chrome finish. KATHLEEN console, DUPRE' mirror and NAPO ottoman.







RIVOLI R9 - L170, P51, H220 cm

Vanity unit in G513 glossy avorio finish with rhombus decoration. Top in glossy glass avorio 613 back-painted, washbasins in glossy white resin, FORTUNY taps in gold finish. Rectangular mirrors in G513 glossy avorio finish and gold frame, VICKY wall lamps in gold finish. DIAMOND wall fixed towel holders in gold finish. FEBE small armchair.





MADE IN ITALY

© Copyright Oasis S.r.l. - Italy
Entirely designed and made in Italy.

Oasis reserves the right to make all necessary modifications (in colour, size and technical details) to its products in order to enhance their use and esthetic value. Furthermore, it may suspend their production at any moment without notice. Such instances may not be subject to claim by the client.

Oasisgroup declines its responsibility for any possible uncertainties due to misprints in this catalogue.

Ed.17 - Rev.02



Oasis Srl - Via Favola,19 - 33070 Polcenigo - Pordenone, Italy - T +39 0434 654752 - F +39 0434 654850
info@oasisgroup.it - www.oasisgroup.it



www.oasisgroup.it