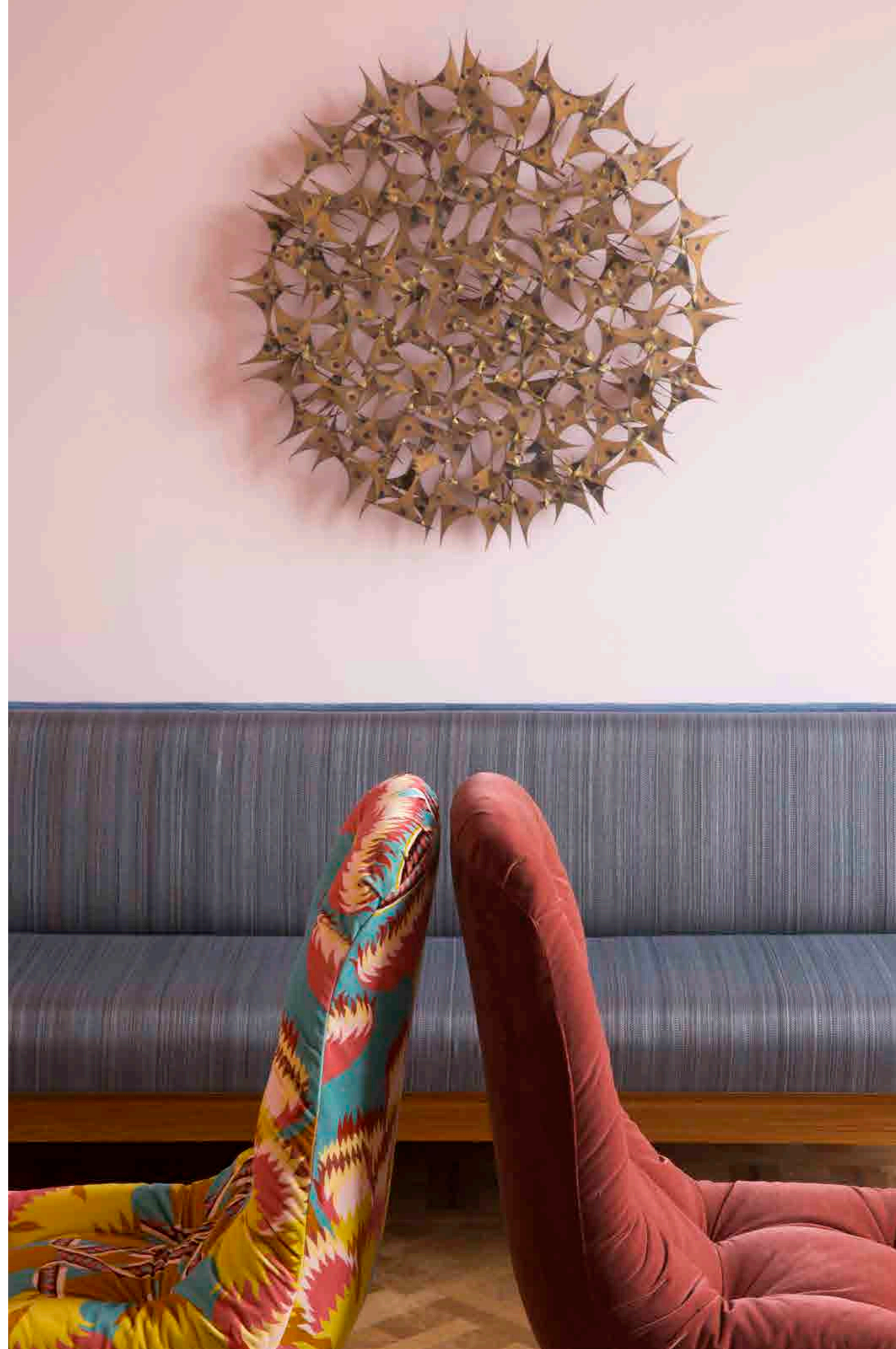


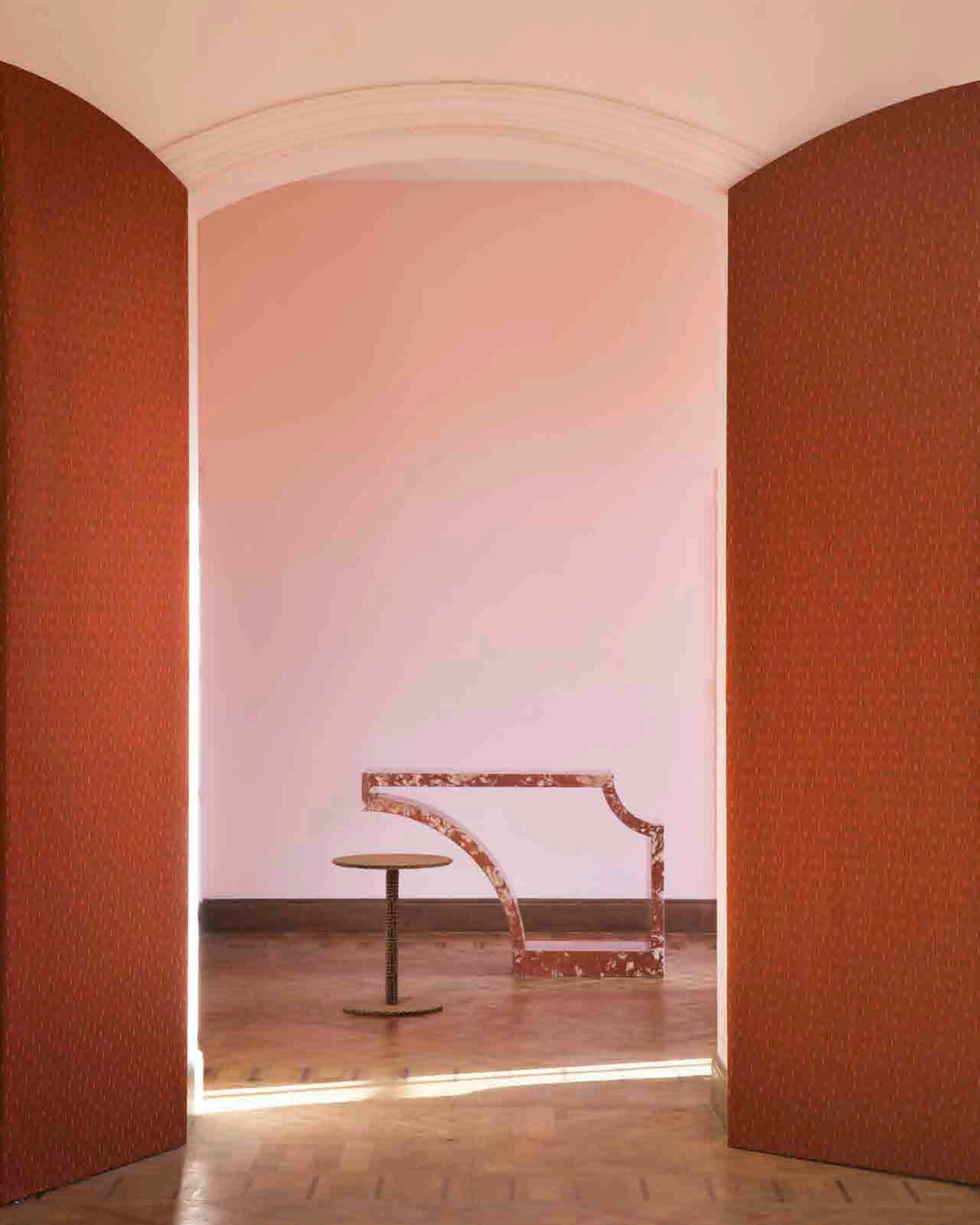
A breath of fresh air blows through Créations Métaphores collections, a warm breeze from faraway southern regions.

It awakens the desire to travel.

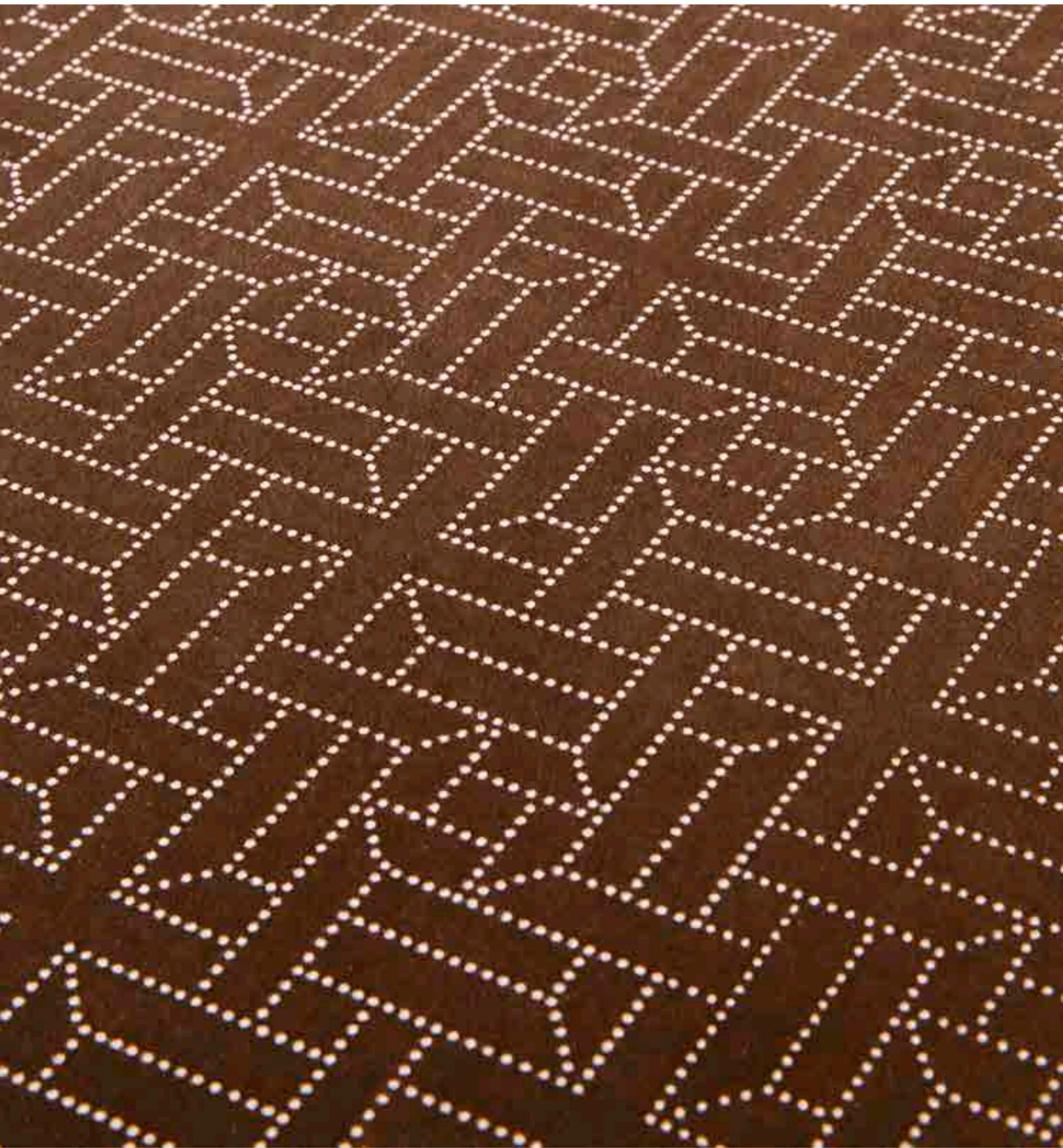
From Zanzibar to Khartoum, by way of Luxor, leaving the beaten trail to be inspired by exceptional fabrics, linen and wool blends, both raw and refined, velvets with geometric figures suggesting inlaid work, brocatelle adorned with patterns inspired by remote temples... an escape southward elegant, fresh and colorful lands.



Flambeaux Imprimés
(design 'Pierre Marie for Créations Métaphores),
Amazonie and Gael 2401

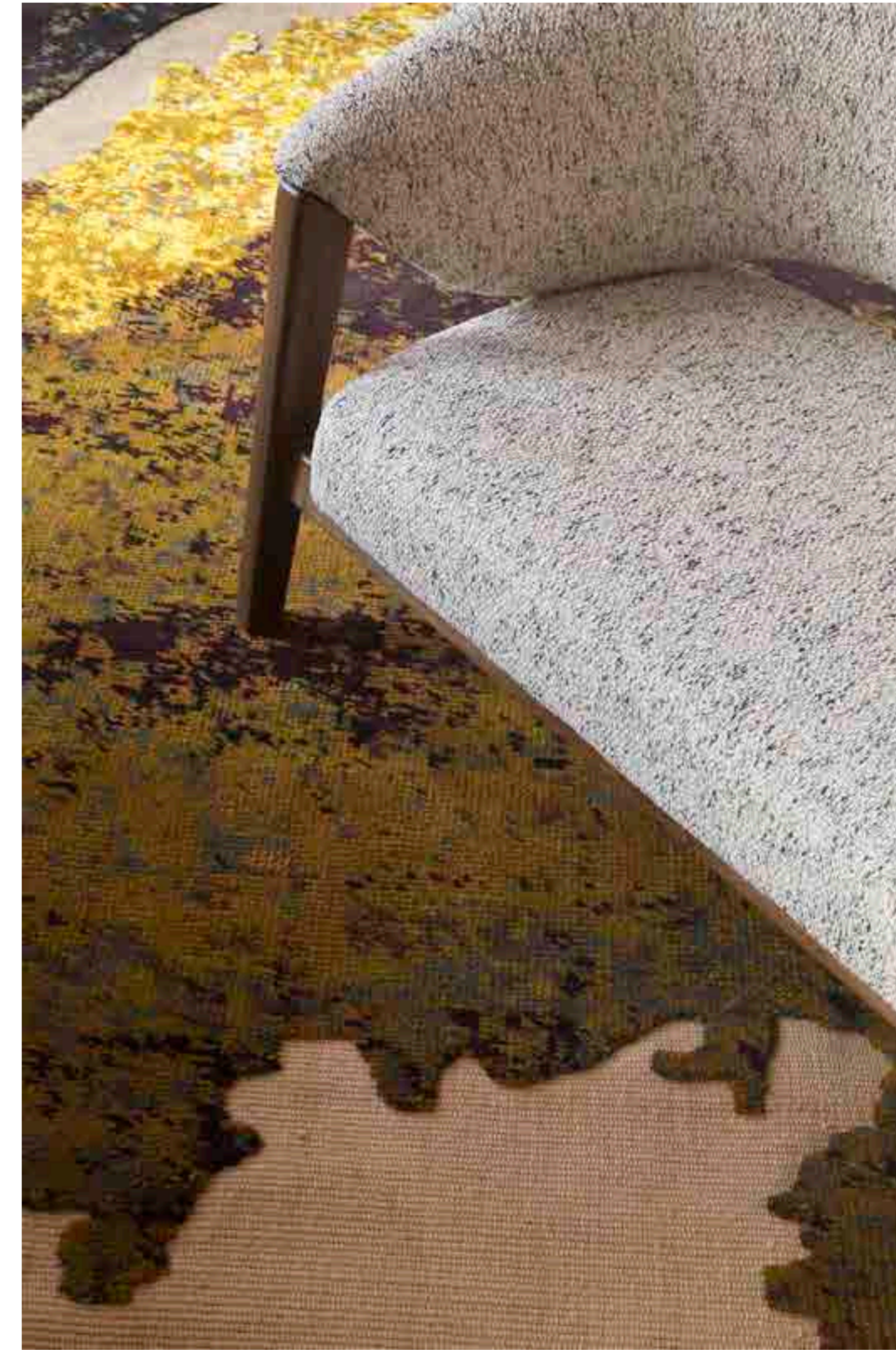


Reggae and Khartoum



Reggae and Khartoum





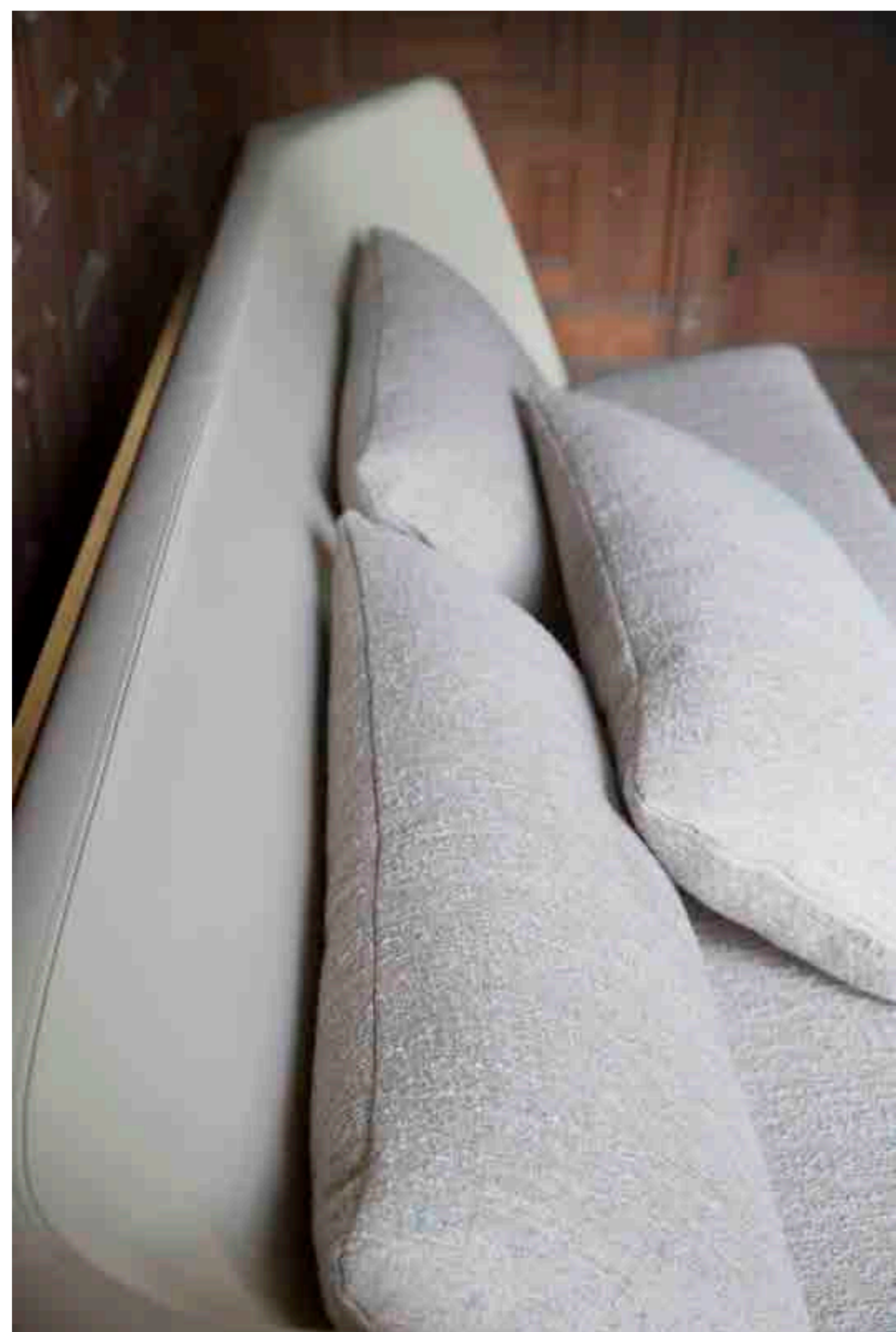
Tanganika on Armchair and Banquette Apora, Design B. Moinard

Tanganika on Armchair and Banquette Apora, Design B. Moinard

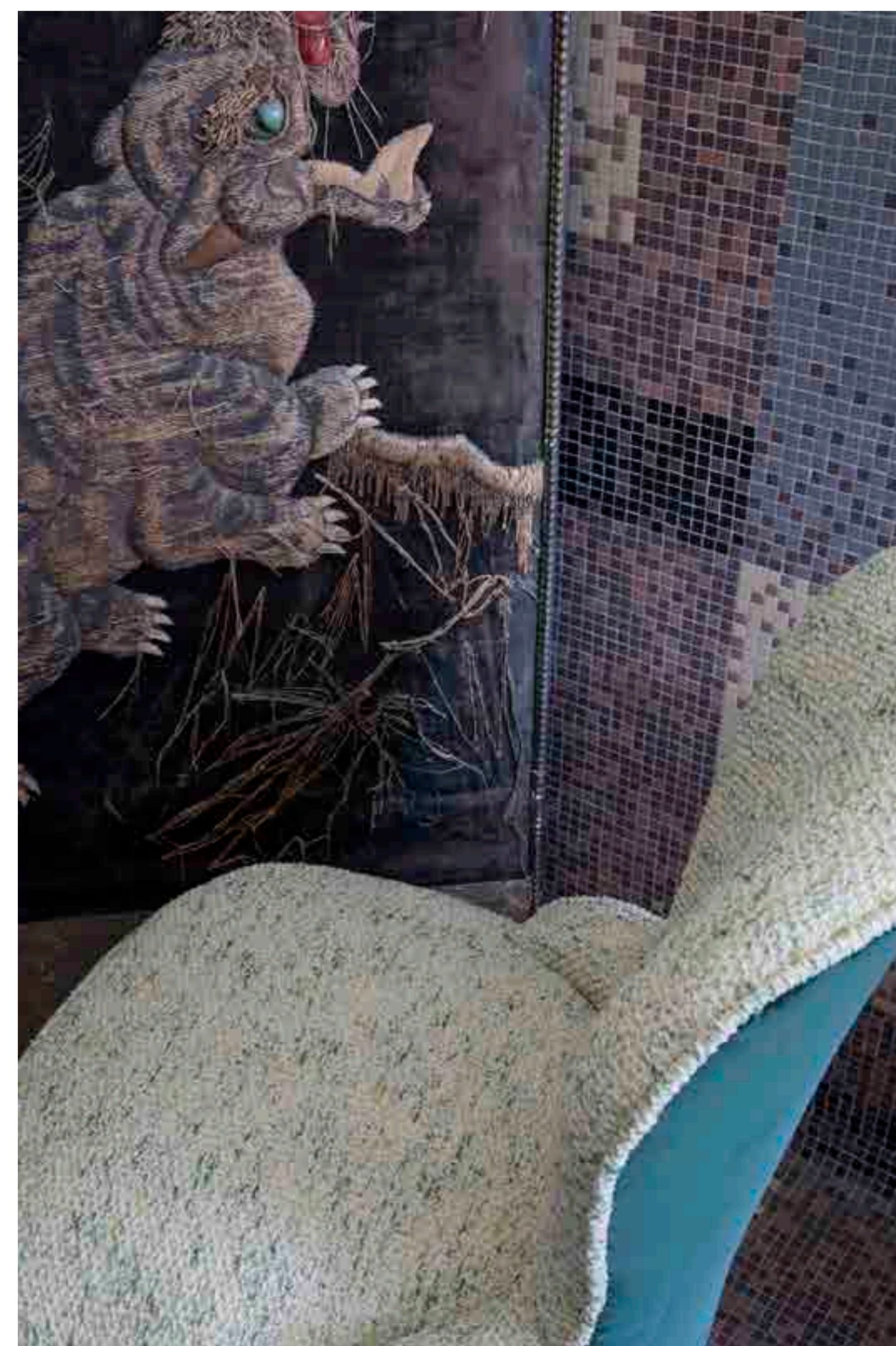




Zanzibar on Daybed Courtrai, Design B. Moinard

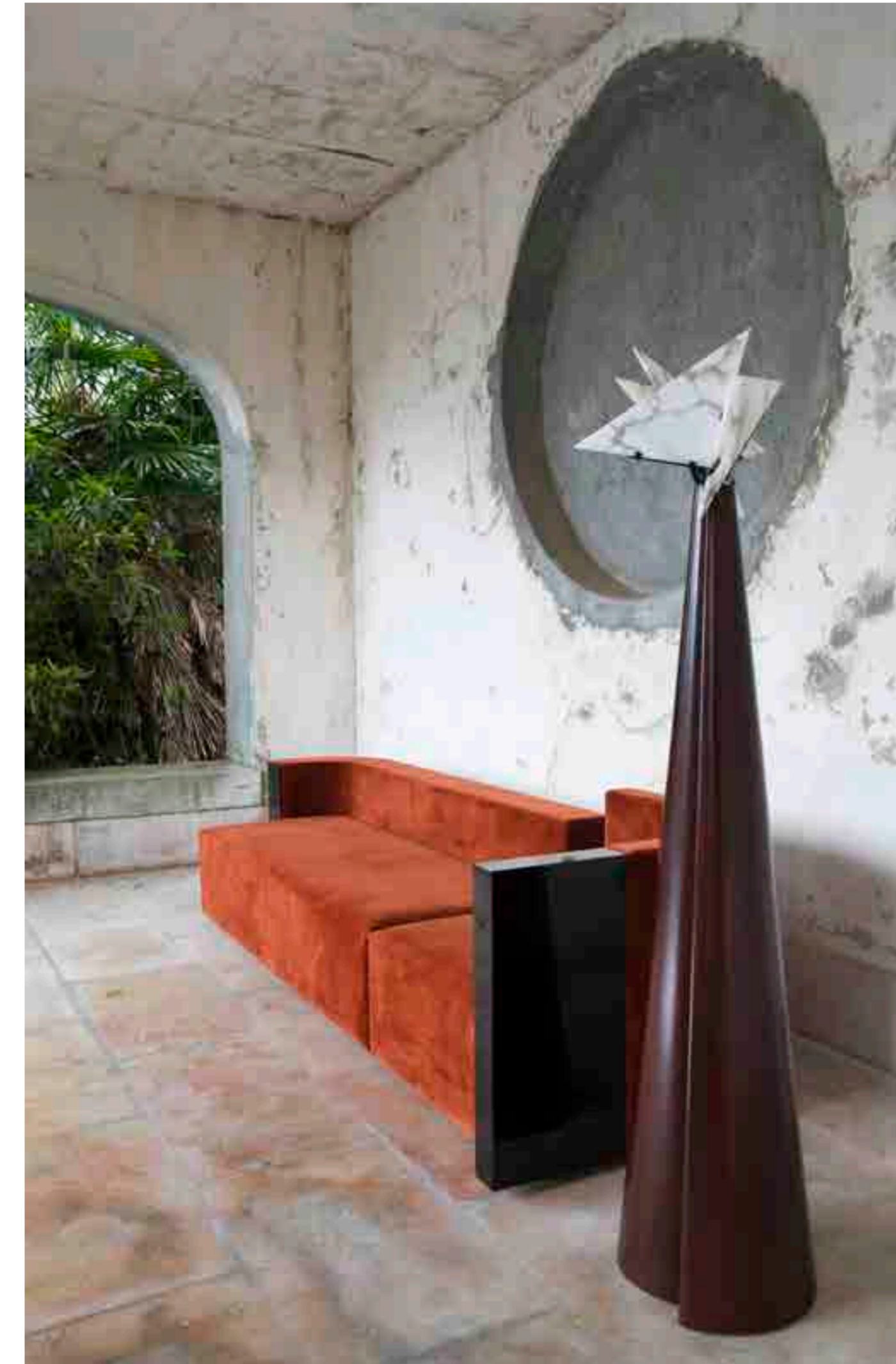


Zanzibar on Sofa Courtrai, Design B. Moinard





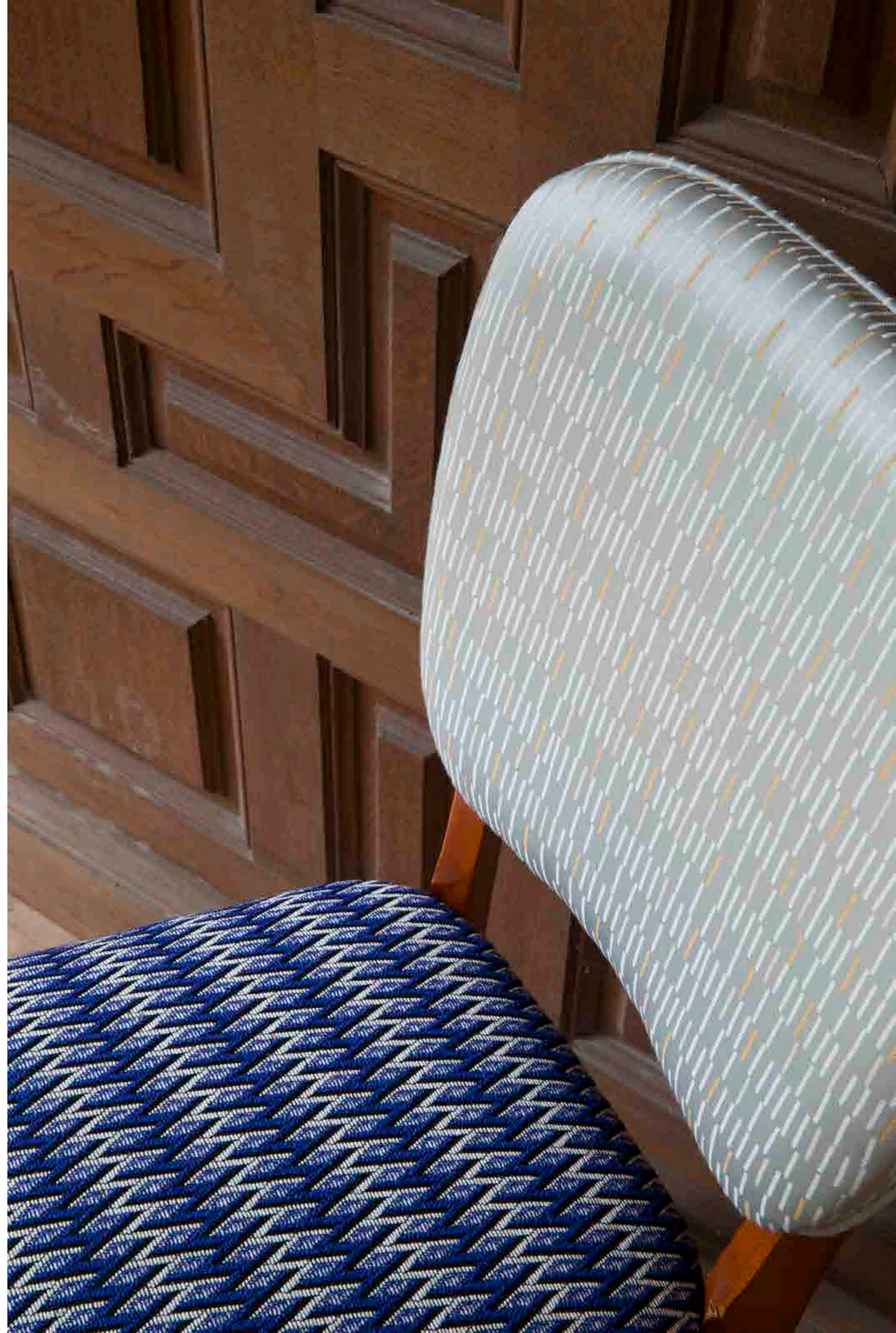
Monsieur Le Prince on Sofa Baci, Design R. Parente



Monsieur Le Prince on Sofa Baci, Design R. Parente



Reggae and Massai

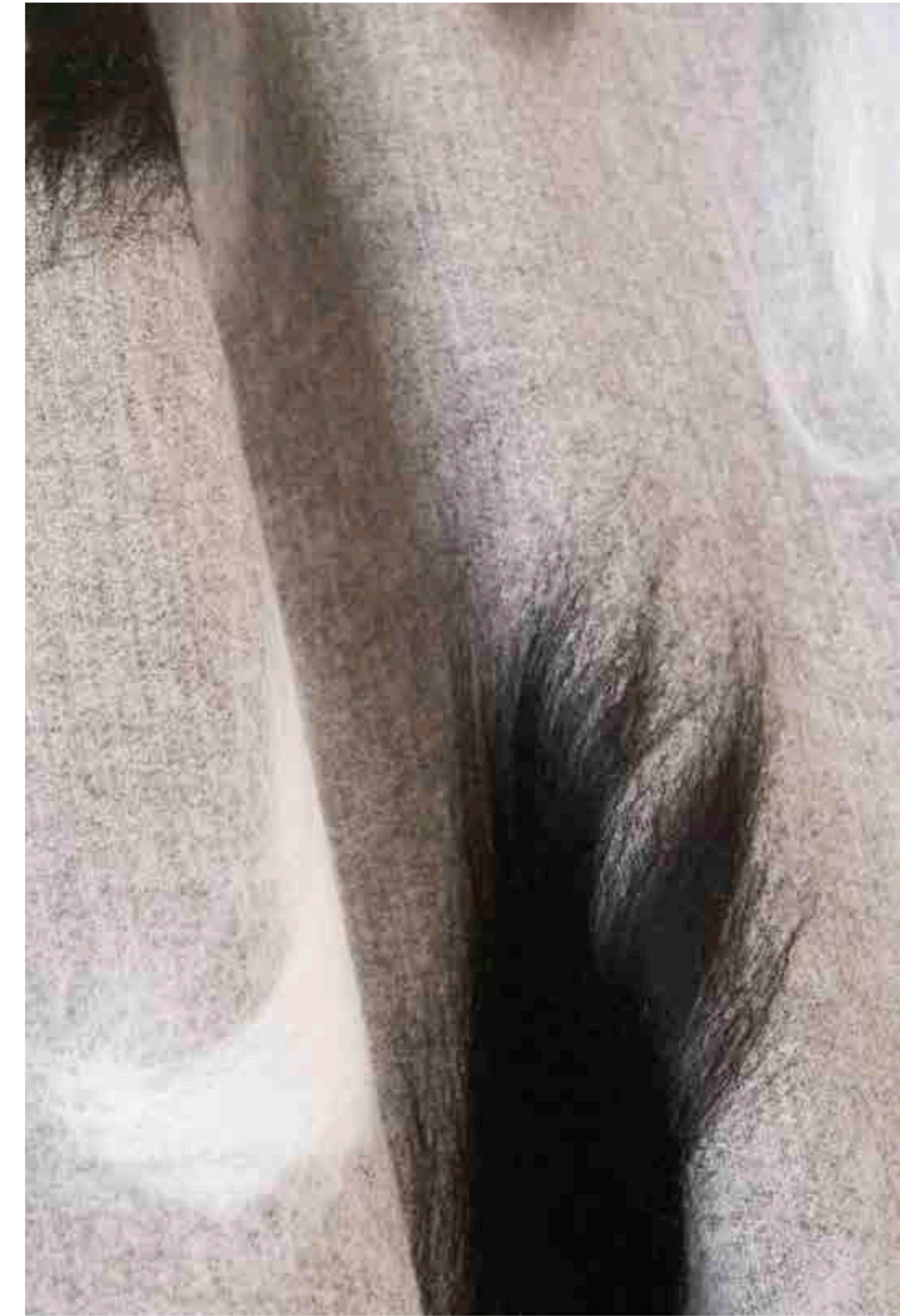
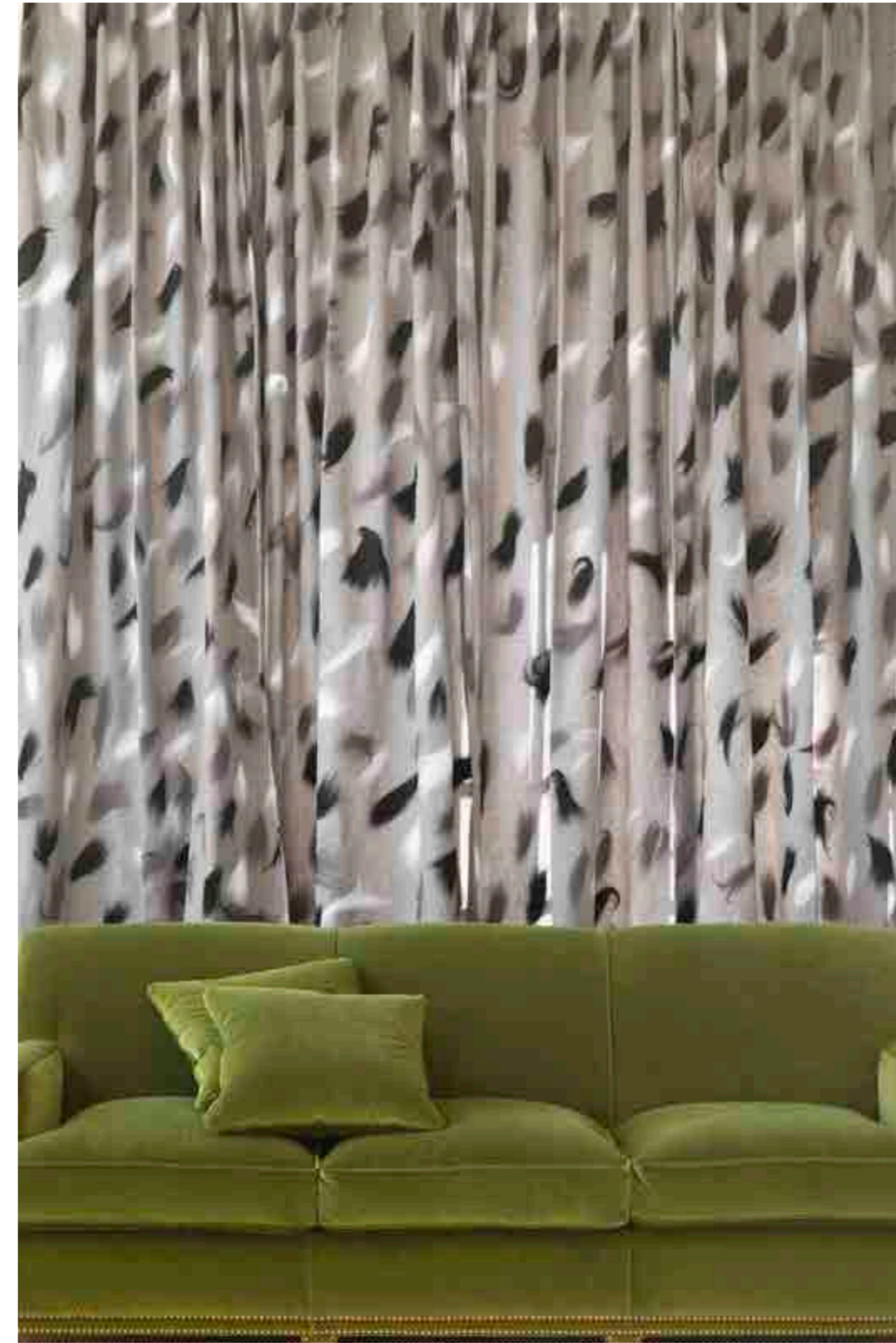


Reggae and Massai





Amazonie on Sofa Suduca et Mérillou,
Galerie Saint-Jacques Edition

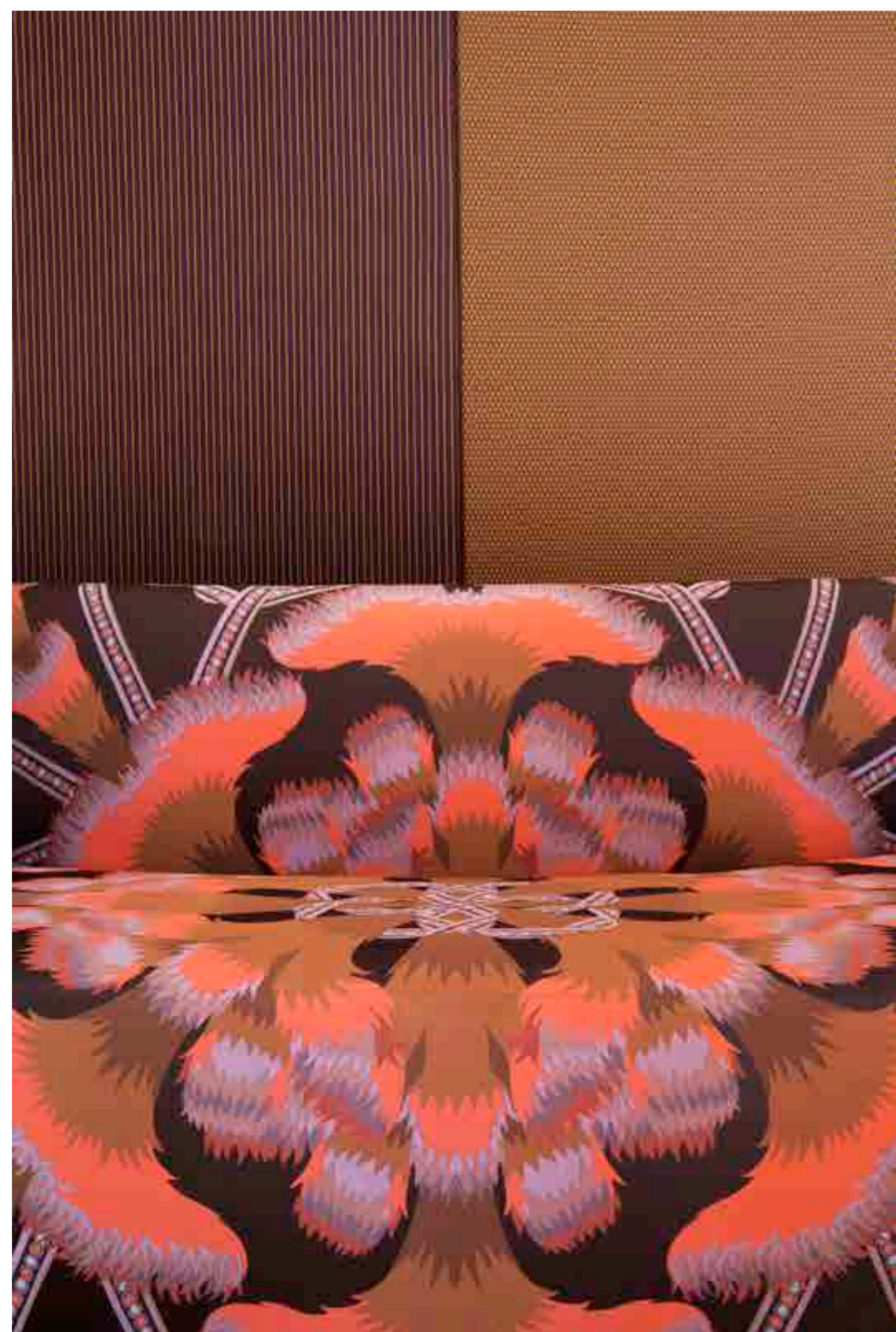


Virevolte and Amazonie on Sofa Suduca et Mérillou,
Galerie Saint-Jacques Edition

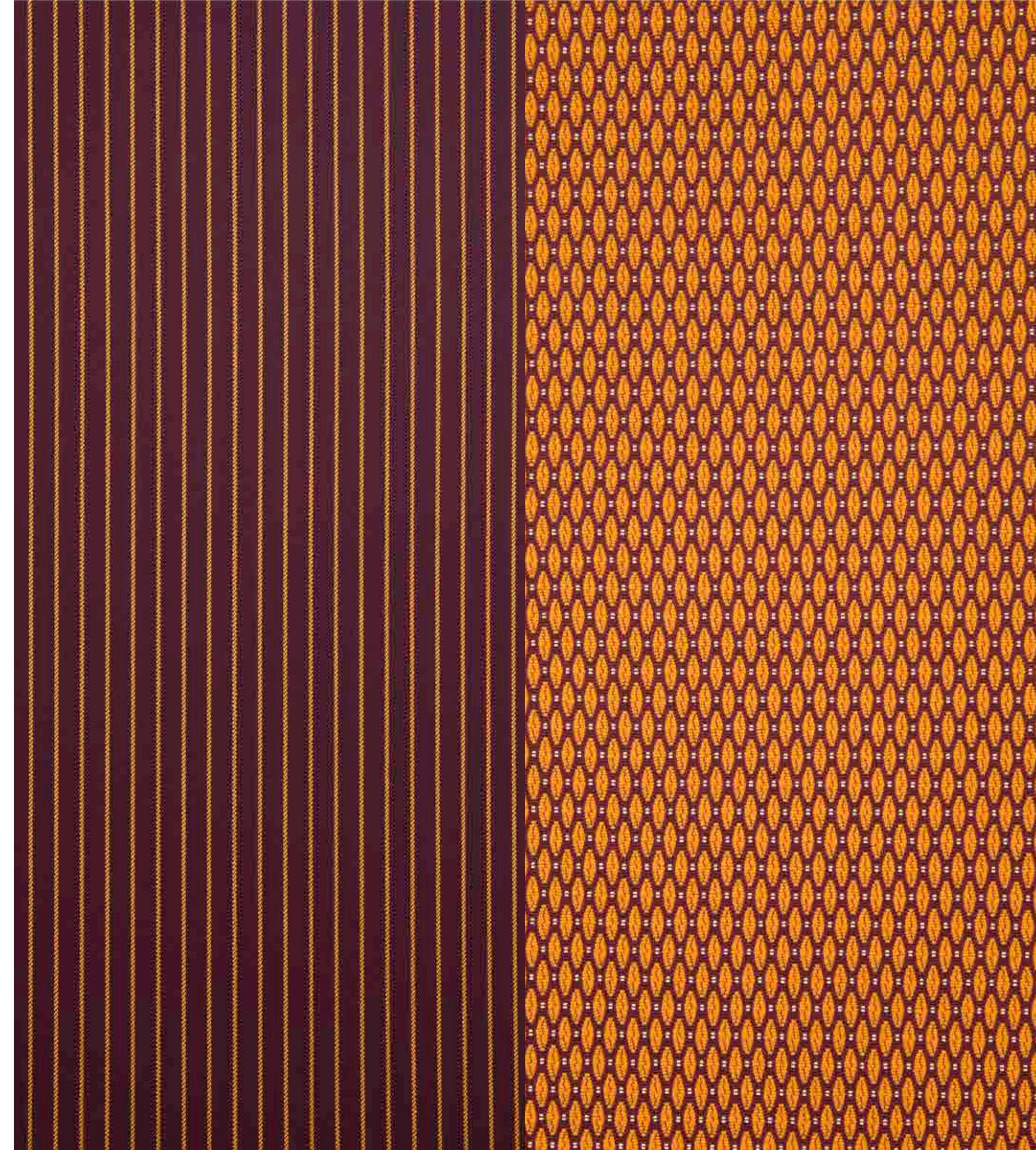


Zanzibar and Amazonie

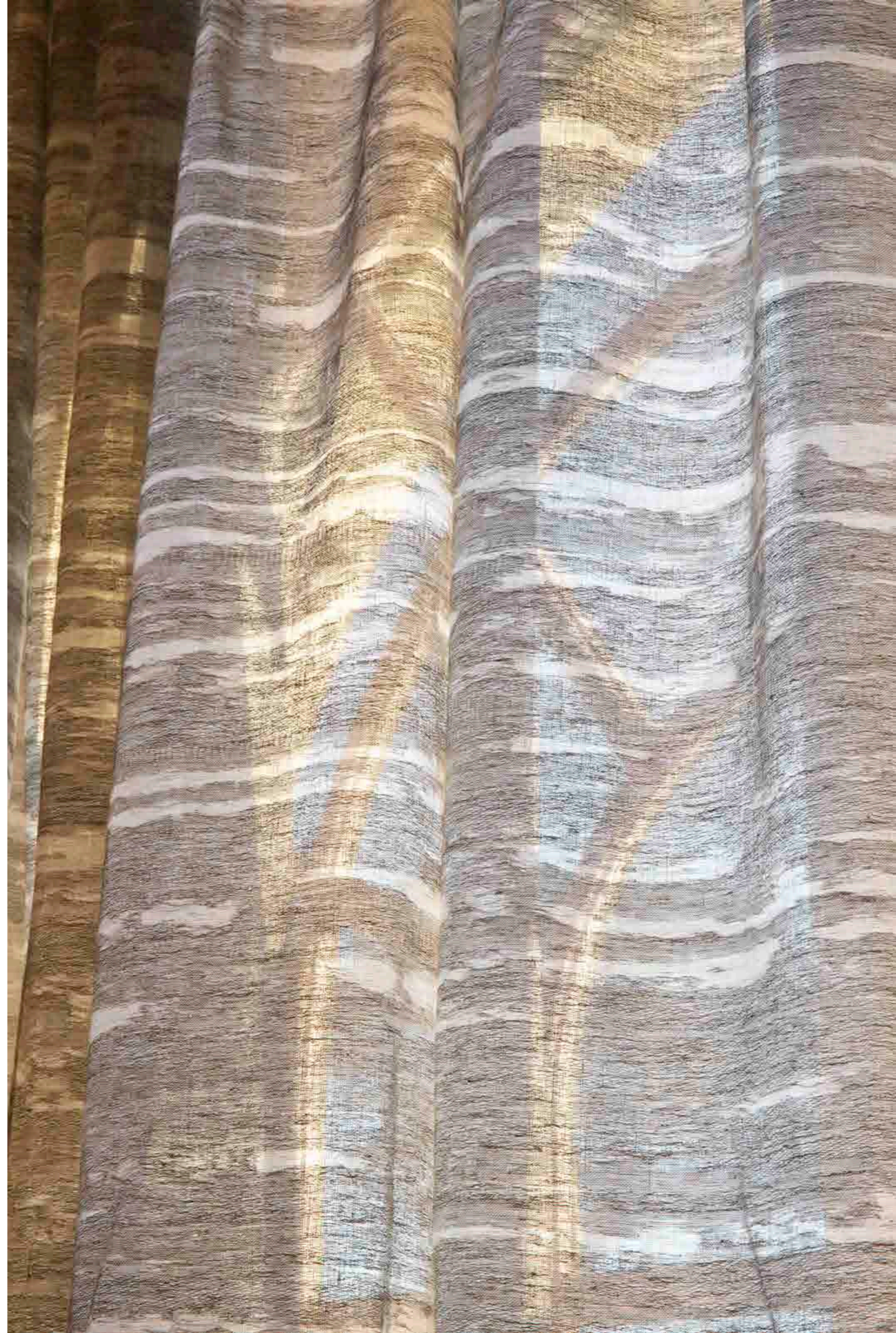
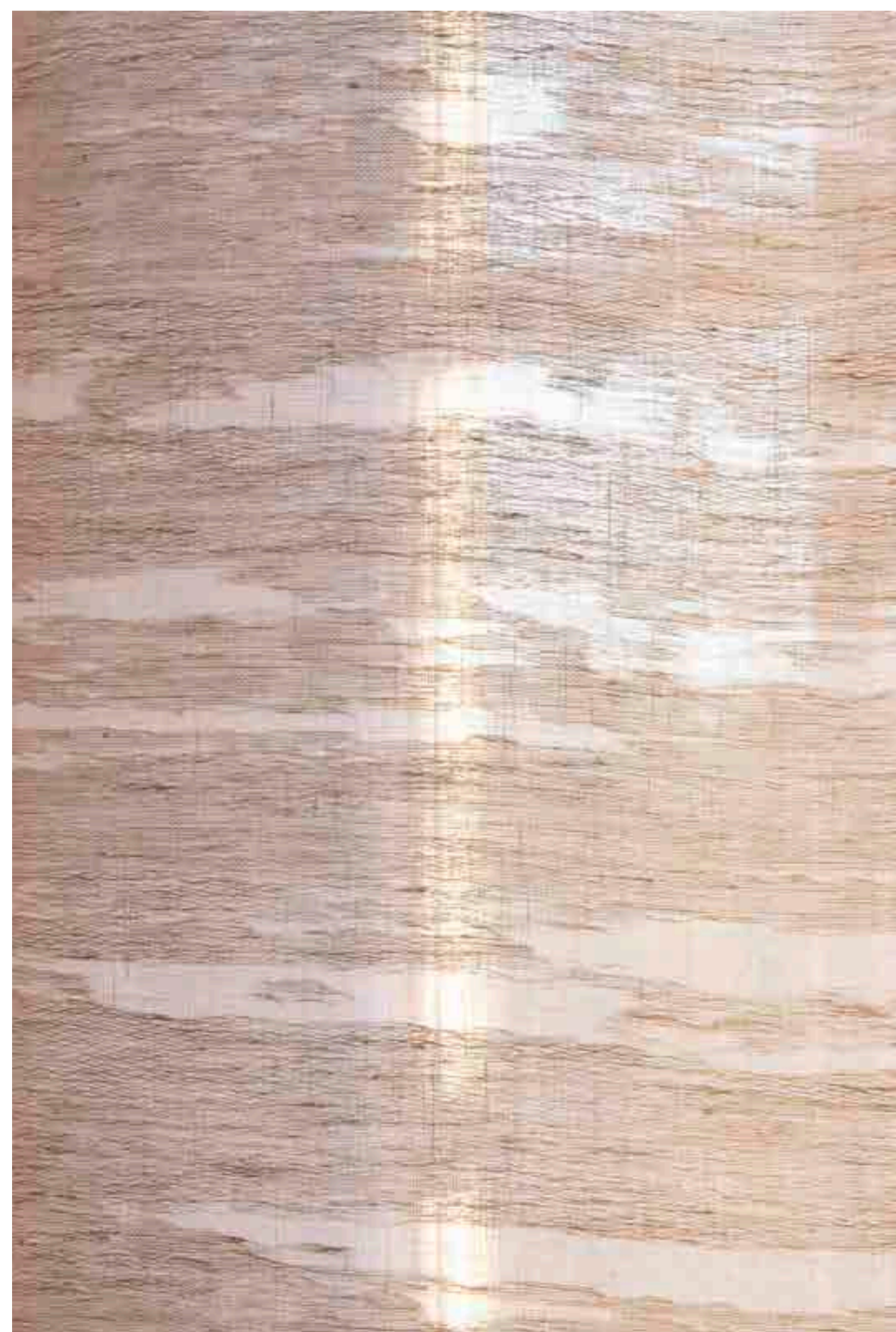




Flocons, Latitude, Flambeaux et Rubans 'Pierre Marie for Créations Métaphores',
and Rubans Fouillis 'Pierre Marie for Créations Métaphores'

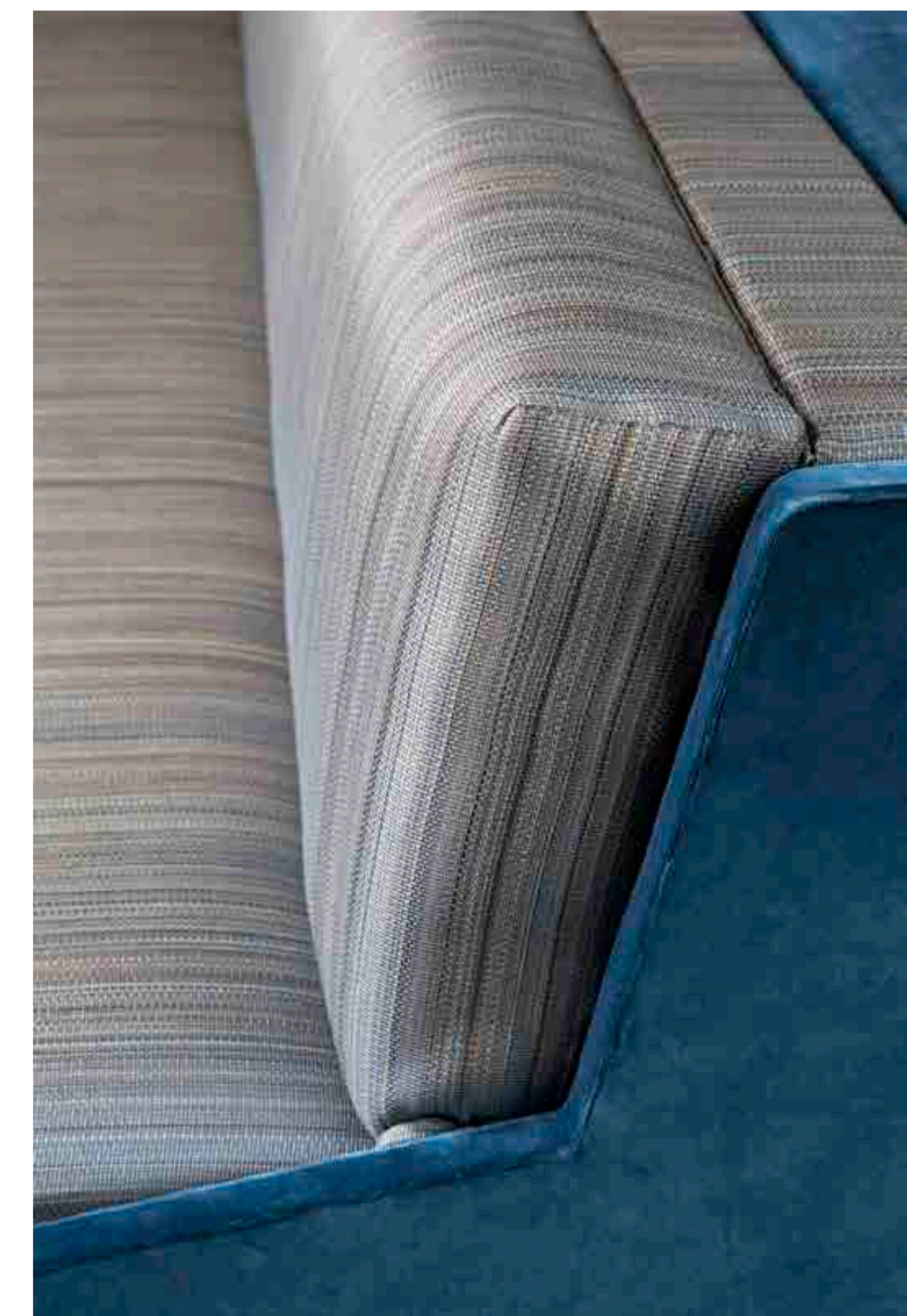
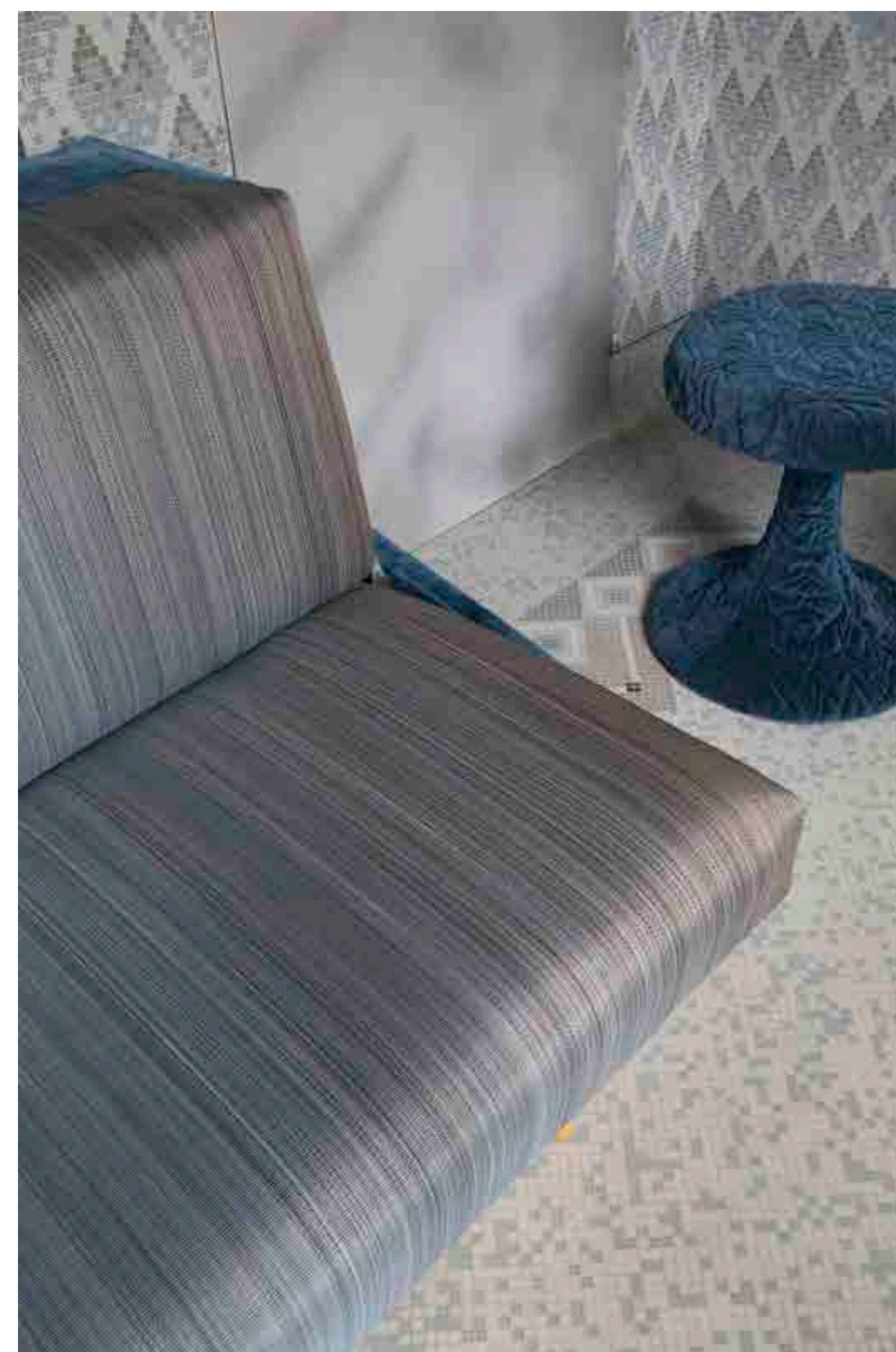


Flocons, Latitude, Flambeaux et Rubans 'Pierre Marie for Créations Métaphores',
and Rubans Fouillis 'Pierre Marie for Créations Métaphores'

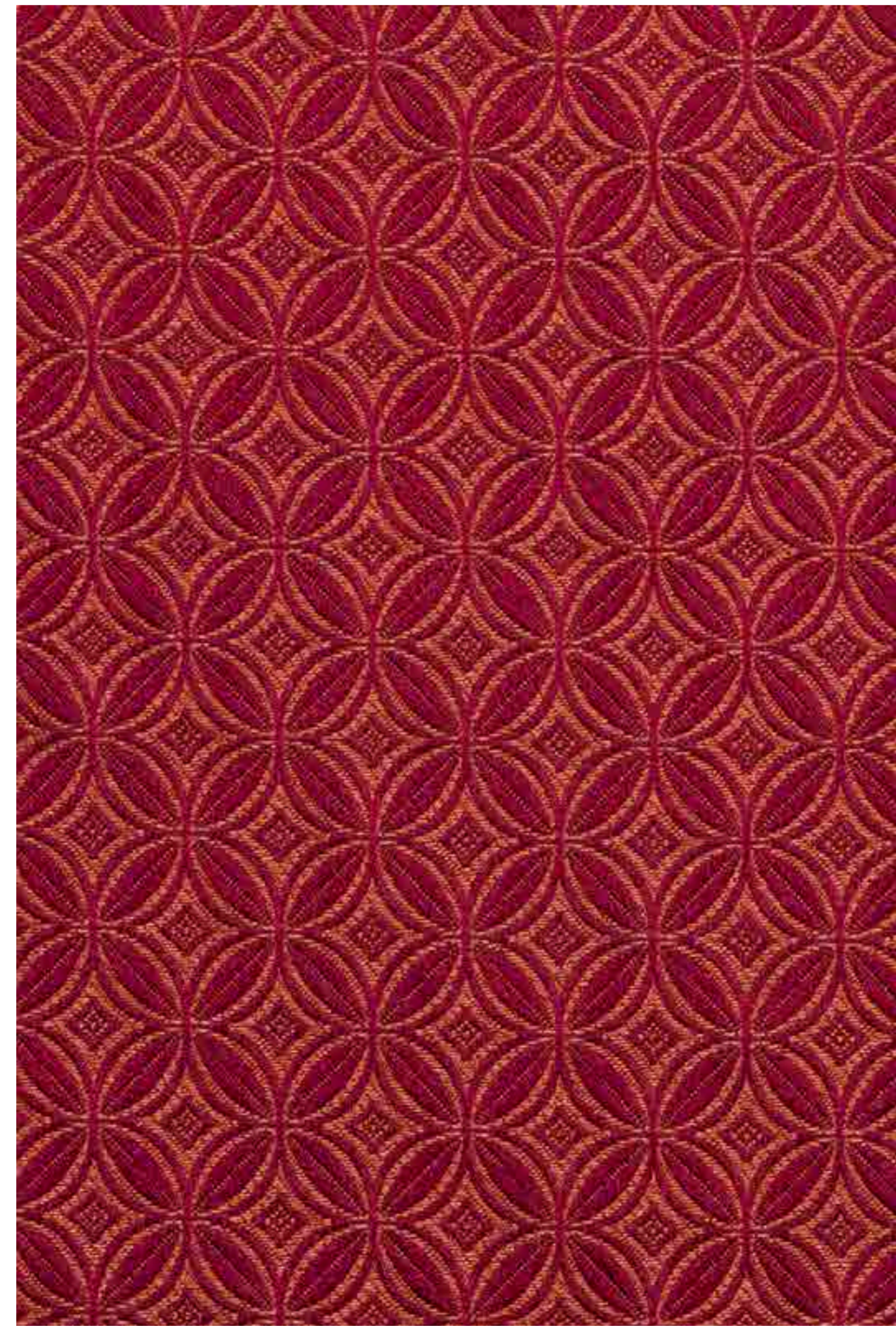








Gael 2401, Amazonie and Aloé

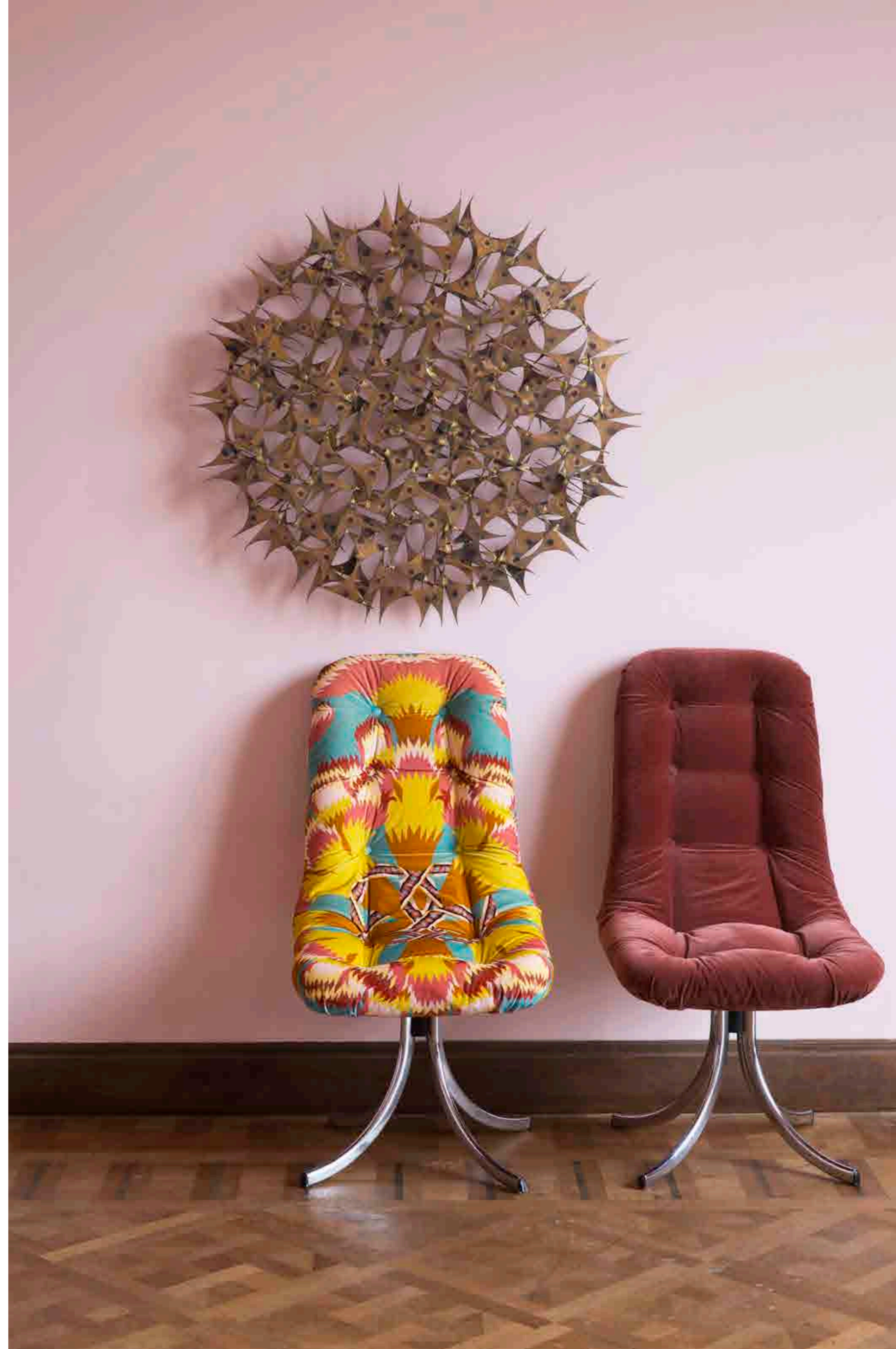


Louxor and Osiris



Flambeaux Imprimés
(design 'Pierre Marie for Créations Métaphores')
and Amazonie

Flambeaux Imprimés
(design 'Pierre Marie for Créations Métaphores')
and Amazonie



CRÉATIONS MÉTAPHORES

ARTISTIC DIRECTOR
PHILIPPE GONZALEZ
ASSISTANT ARTISTIC DIRECTOR
MURIELLE SABATIER

PARIS SHOWROOM
FURSTENBERG@CM-HTH.COM
+33 (0)1 46 33 03 20
5 PLACE DE FÜRSTENBERG 75006 PARIS
MONDAY-FRIDAY 10.00 A.M TO 12.30 P.M AND 1.00 P.M TO 6.30 P.M
SATURDAY 2.00 P.M TO 7.00 P.M

PARIS OFFICE
CONTACT@CM-HTH.COM
+33 (0)1 44 55 37 00
21 RUE CAMBON 75001 PARIS

NEW YORK OFFICE
SALES@CREATIONS-METAPHORES.COM
(+1) 212 921 02 00
1407 BROADWAY (W39th STREET) SUITE 3102 NEW YORK NY 10018

PRESS OFFICE
VIRGINIE JOUVE
VIRGINIEJOUVE.COM
RELATIONSPRESSE@VIRGINIEJOUVE.COM
+33 (0)1 49 29 06 06
10 RUE BEAUTREILLIS 75004 PARIS

CREDITS

PHOTOGRAPHER
JEAN-MARC PALISSE

STYLIST
AURÉLIE DES ROBERT

GRAPHIC DESIGN
ATELIER JULIA BERNARD

PUBLICATION COORDINATOR
CHARLOTTE HESNARD

ACKNOWLEDGEMENTS

WITH THANKS TO THE DOMAINE DE MAGNAN

IN 1928, DURING THE SPANISH CIVIL WAR, THE SPANISH ROYAL FAMILY FLED THE COUNTRY AND HAD A LARGE RESIDENTIAL COMPLEX BUILT, BY THE SPANISH ARCHITECT ARAGON, NEAR BIARRITZ.

AMONGST THE ROYALS WAS FABIOLA DE MORA Y ARAGON, WHO IN 1960 WOULD MARRY KING BALDWIN AND BE CROWNED QUEEN OF BELGIUM.

THE MAGNIFICENT PROPERTY LOCATED JUST ABOVE LAKE MOURISCOT AND CLOSE TO THE ILBARRITZ BEACH, REMAINED THE PROPERTY OF THE ROYAL HOUSE UNTIL 20-7 WHEN IT WAS PURCHASED BY ANNE AND JÉRÔME ISRAEL.

ALTHOUGH THE RESIDENCE REMAINED VACANT FOR MANY YEARS, IT RETAINS ITS ART DECO CHARACTERISTICS.

DOMAINE DE MAGNAN - BIARRITZ

+33 (0)6 11 78 71 01

WITH THANKS FOR THE USE OF FURNITURE AND ACCESSORIES TO

CORLER
CORLER6.WEBNOTE.FR
P. 21

DÉSIO
DESIO.COM
P. 25

HOULÈS
HOULES.COM
P. 17, 18

GALERIE MCDE, ÉDITION PIERRE CHAREAU
PIERRECHAREAU-EDITION.FR
P. 10, 11

BRUNO MOINARD ÉDITIONS
BRUNOMOINARDEDITIONS.COM
P. 5, 6, 7, 8

RODOLPHE PARENTE ARCHITECTURE & DESIGN
RODOLPHEPARENTE.COM
P. 10, 11

GALERIE SAINT-JACQUES
GALERIESAINJTJACQUES.COM
P. 15, 16

GALERIE ALEXANDRE GUILLEMAIN - ARTEFACT DESIGN
DESIGNARTEFACT.COM
P. 2, 5, 6, 8, 25, 27

GALERIE ARMEL SOYER
ARMELSOYER.COM
P. 3, 26

TRIODE
TRIODEDESIGN.COM
P. 12, 19

ACCESSORIES

CORLER
FLAT IRON RAIL

DÉSIO
PROGRAMME BOX, SOFA, DESIGN D. VERSAVEL

HOULÈS
AURORE, TRIMMINGS

GALERIE MCDE, ÉDITION PIERRE CHAREAU
RELIGIEUSE, WOOD AND ALABASTER LAMP

BRUNO MOINARD ÉDITIONS
COURTRAI, SOFA, DESIGN B. MOINARD
COURTRAI, DAYBED, DESIGN B. MOINARD
APORA, BANQUETTE, DESIGN B. MOINARD
APORA, ARMCHAIR, DESIGN B. MOINARD
TERZO, CONSOLE, DESIGN B. MOINARD
FORSSA, LOW TABLES, DESIGN B. MOINARD
MIRAI AND COMPORTA 3, RUG, DESIGN B. MOINARD
TABLEAU ORIGINAL, WATERCOLOUR, DESIGN B. MOINARD
ZLATAR, SIDE TABLE, DESIGN B. MOINARD

RODOLPHE PARENTE ARCHITECTURE & DESIGN
BACI, SOFA, DESIGN R. PARENTE

GALERIE SAINT-JACQUES
SOFA SUDUCA & MÉRILLOU, EDITION GALERIE SAINT-JACQUES
PAINTED WOOD DECORATIVE TREE, DESIGN T. HENNESSY, CIRCA 1980

GALERIE ALEXANDRE GUILLEMAIN - ARTEFACT DESIGN
MURAL SCULPTURE, MARK WEINSTEIN, CIRCA 1960
FLOOR SCULPTURE, DE LUCIANO FRIGERIO
VALLAURIS, CERAMICS MASKS, CIRCA 1950

GALERIE ARMEL SOYER
PARRALAX, WELDED STEEL TABLE MIRROR AND CARBON,
DESIGN J. MAYOR
PALAIS, CERAMIC CONSOLE, DESIGN P. GONALONS

TRIODE
HELIX FLOOR, BRASS FLOOR LAMP, DESIGN B. BRITAIN
OS, LOW TABLE, DESIGN ATELIER DE TROUPE
VISCOSITY M, WALL LAMP, DESIGN BLANKBLANK

WITH THANKS TO THE FOLLOWING UPHOLSTERERS

ATELIER DÉGUT
FREDERICDEGUT.FR
CONTACT@FREDERICDEGUT.FR
+33 (0)4 78 60 87 46
24 RUE RABELAIS 69 003 LYON

S'ÉVADER CHEZ SOI
TAPISSIER-DECORATEUR73.FR
JPSPRINGOLO@GMAIL.COM
+33 (0)6 61 16 34 85
651 FAUBOURG MONTMÉLIAN 73 000 CHAMBÉRY

IRÉALE
IREALE-TAPISSIERETDECORATION.FR
CONTACT@IREALE-TAPISSIERETDECORATION.FR
+33 (0)1 42 64 74 52
7 RUE CONSTANCE 75 018 PARIS

ATELIER JOËL WINTER
ATELIER.JOELWINTER@GMAIL.COM
+33 (0)6 03 16 13 33
38 AVENUE RAYMOND CROLAND
92 260 FONTENAY-AUX-ROSES

ATELIER SÉCRÉA
SECREA-TAPISSERIE.COM
SECREA.TAPISSERIE@GMAIL.COM
+33 (0)1 48 54 99 14
13 PLACE DE LA RÉPUBLIQUE 93 250 VILLEMOMBLE

LA THOMARIE
LATHOMARIE.CANALBLOG.COM
GRACIAJACQUOT@YAHOO.FR
+33 (0)6 76 13 33 18
3 RUE DU MONUMENT 38 300 BOURGOIN-JALLIEU

We would like to thank the Designer Pierre Marie
for his collaboration in the development
of the fabrics **Flambeaux et Rubans** and **Rubans Fouillis**
'Pierre Marie for Créations Métaphores' whose design has been used
on the **Flambeaux Imprimés** edition.

